

Board of Education
January 27, 2025

Attendance Boundaries

Edison Elementary School



16 Elementary Attendance Areas

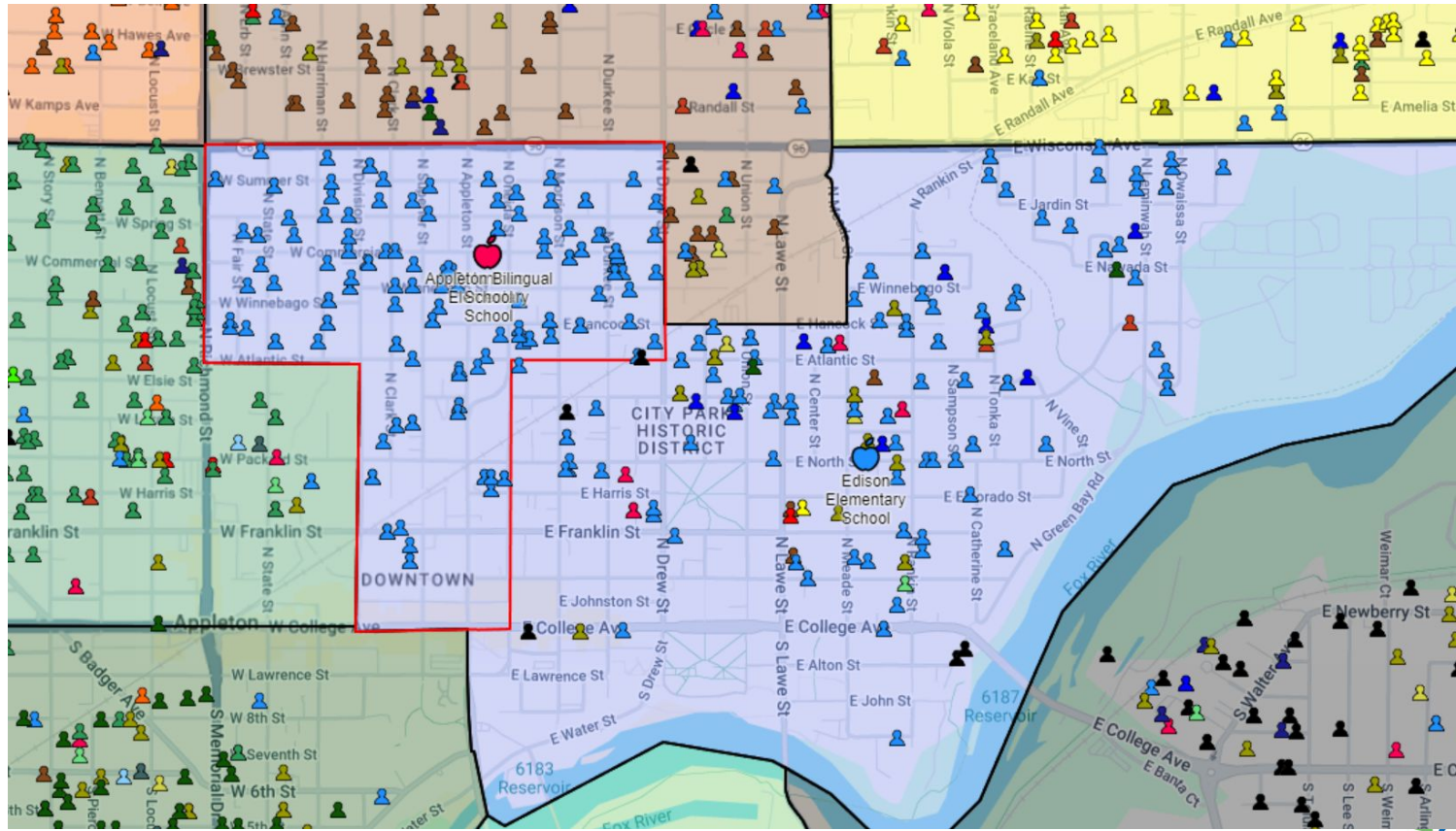


Decision-making Criteria:

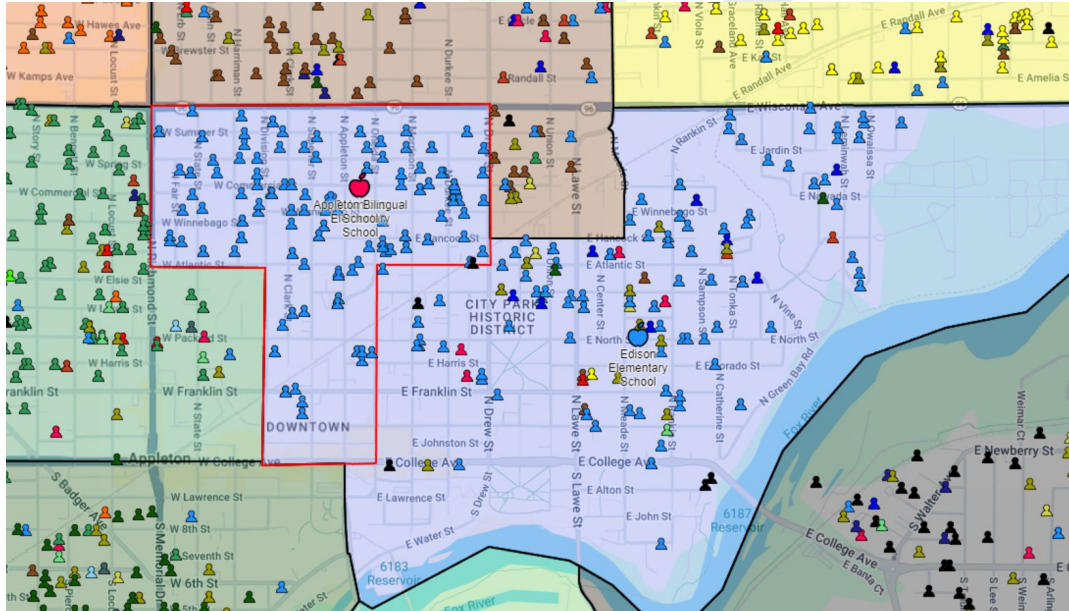
- Geographic proximity to the school
- Enrollment capacity and current enrollment
- Feeder patterns to align with middle and high school boundaries
- Transportation and accessibility
- Neighborhood integrity
- Growth and future development
- Demographics



Option #1



Option #1

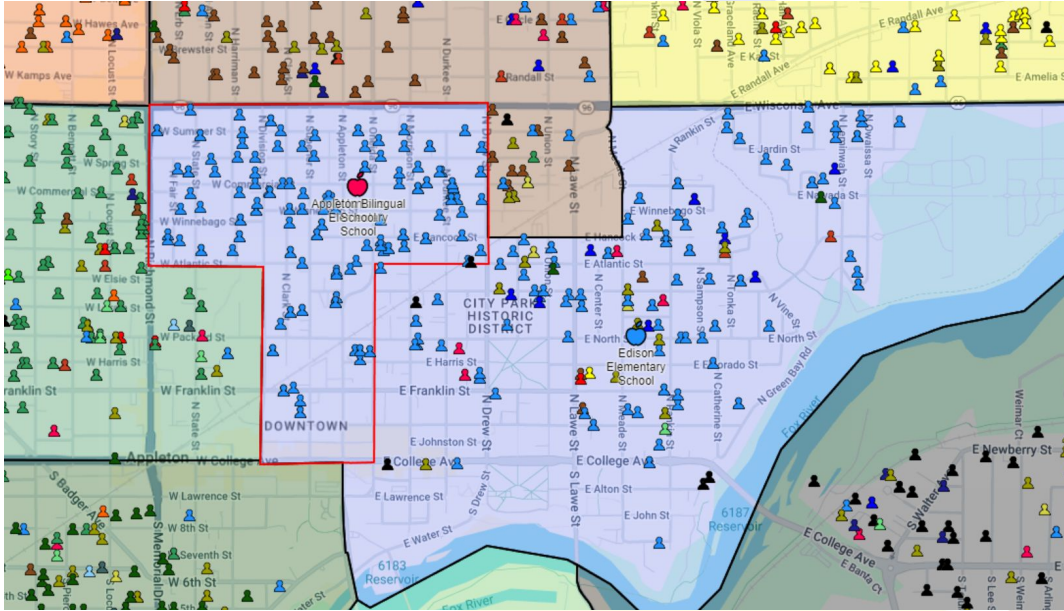


Positives:

- Geographic proximity - No student would live farther than 1.5 miles from Edison
- Enrollment capacity - Edison has space for all 79 current Columbus students
- Feeder patterns - No changes would occur to feeder patterns as both Edison and Columbus feed into Kaleidoscope Middle School and North High School.
- Neighborhood integrity - Columbus and Edison attendance areas are adjacent. The combined Columbus and Edison attendance area would be the 6th smallest of the AASD's 16 elementary school attendance areas.
- Growth and Future Development - No single family housing is planned for this attendance area. Apartments have been proposed in the City of Appleton's plan for the area "North of College Avenue", but no developments are currently being considered.
- Demographics - Edison will see an increase in students of color from 32% to approximately 38%, which is near the district average of 39%. The percentage of students who qualify for free or reduced meals will increase from 49% to 57%, which is above the district average of 47%, and their percentage of students receiving special education services will decrease from 24% to 18%.



Option #1

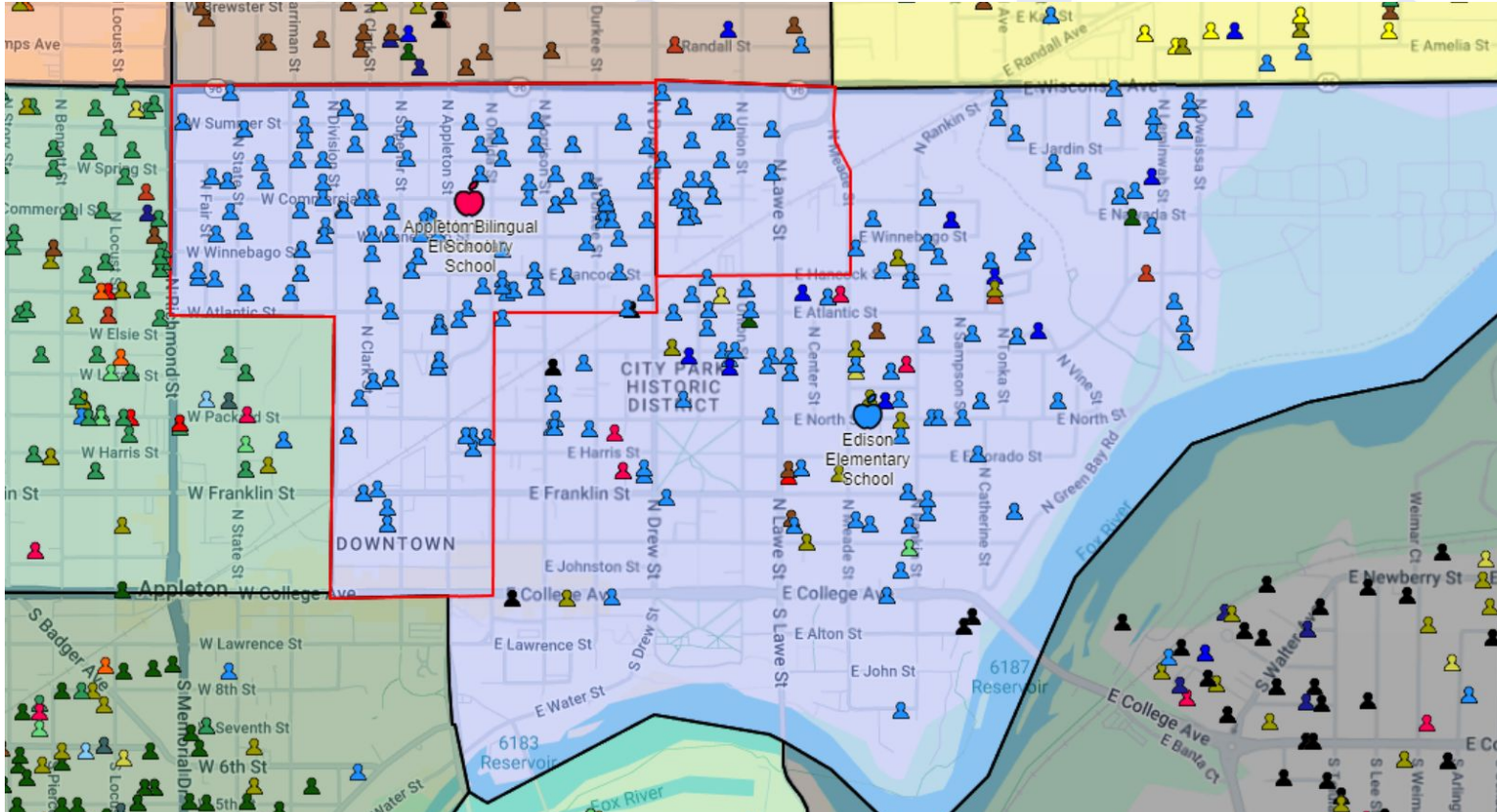


Concerns:

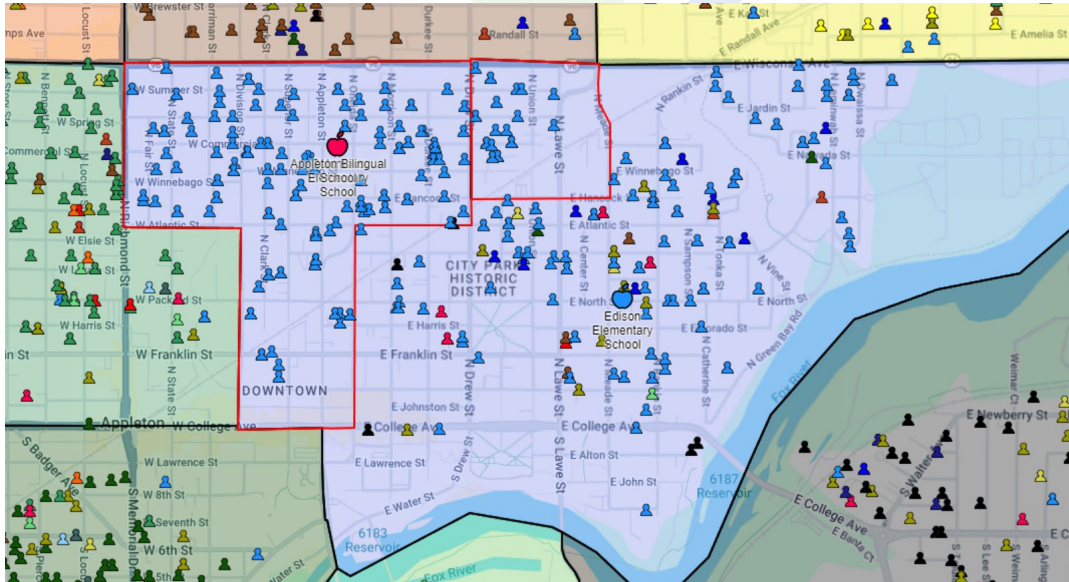
- Geographic proximity - Students living in the Columbus area west of Division Street would live closer to Dunlap than Edison.
 - Accessibility - Columbus students will live farther from Edison than they live from Columbus, requiring a longer walk to and from school. Columbus students would join current Edison students in having to cross Drew, Lawe, and Meade streets.
- ***School of Choice in our district allows students to apply to attend an open elementary school.
- ***No regular education transportation is provided at Columbus, Dunlap, Edison or Franklin.



Option #2



Option #2

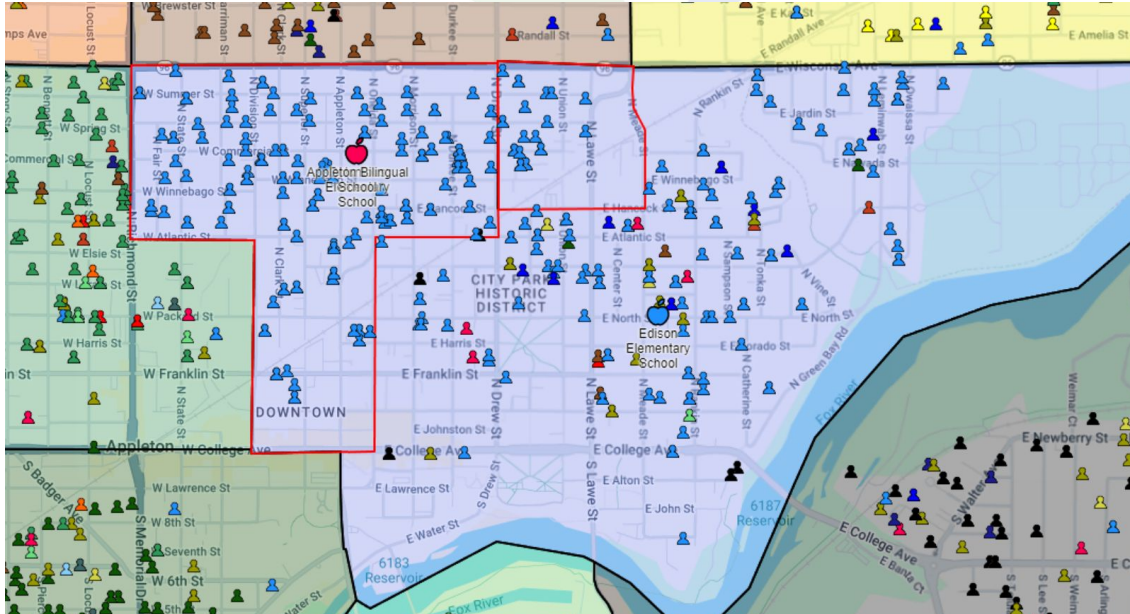


Positives:

- Geographic proximity - Franklin students live closer to Edison than to Franklin
- Enrollment capacity - Edison has space for the additional 10 Franklin students
- Feeder patterns - No changes would occur to feeder patterns as both Edison and Franklin feed into Kaleidoscope Middle School and North High School
- Neighborhood integrity - Franklin students currently cross Wisconsin Avenue
- Growth and Future Development - Minimal additional housing planned for the area
- Demographics - Minimal impact
- Accessibility - Franklin students would have a shorter commute and would not have to cross Wisconsin Avenue



Option #2

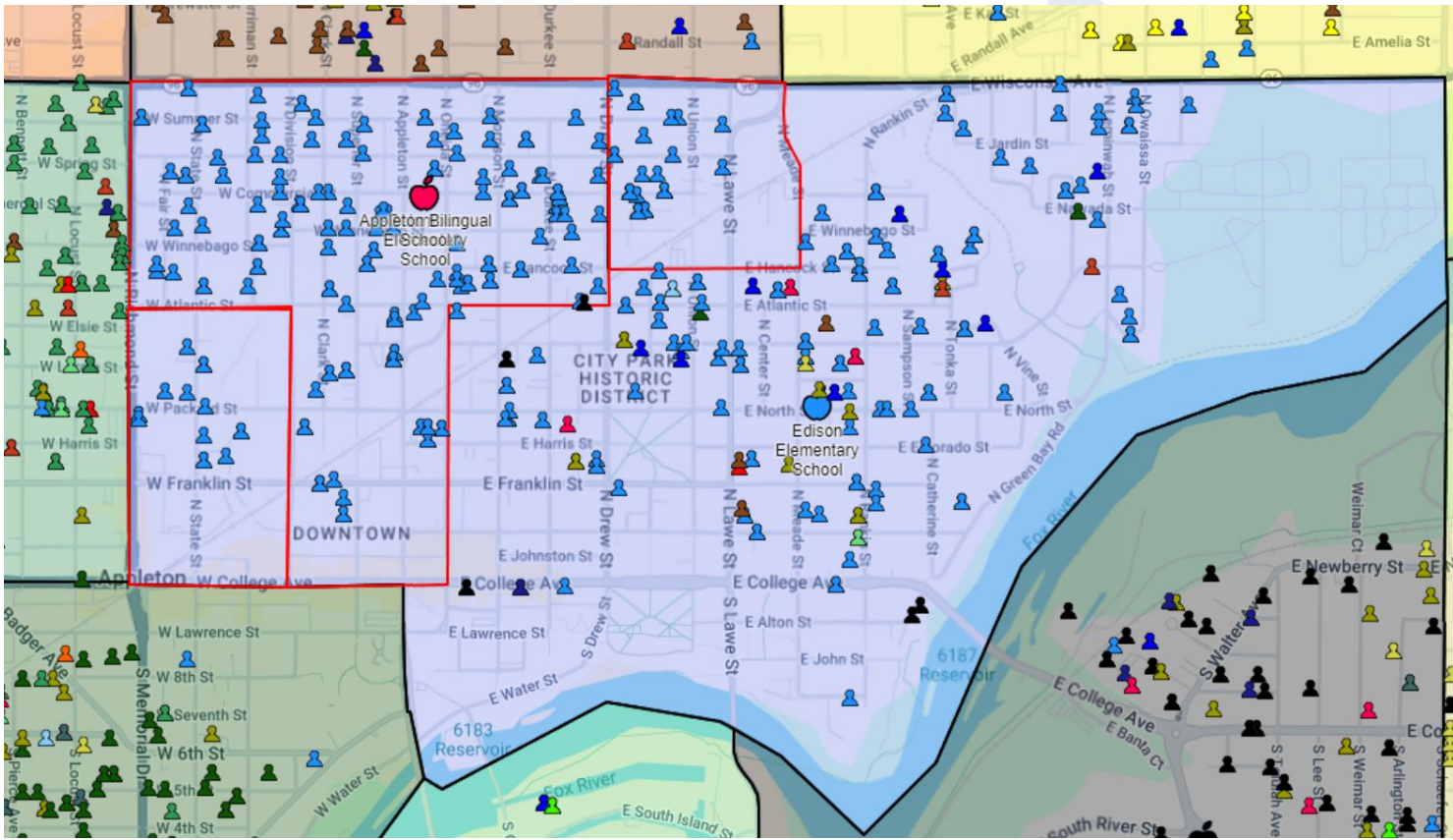


Concerns:

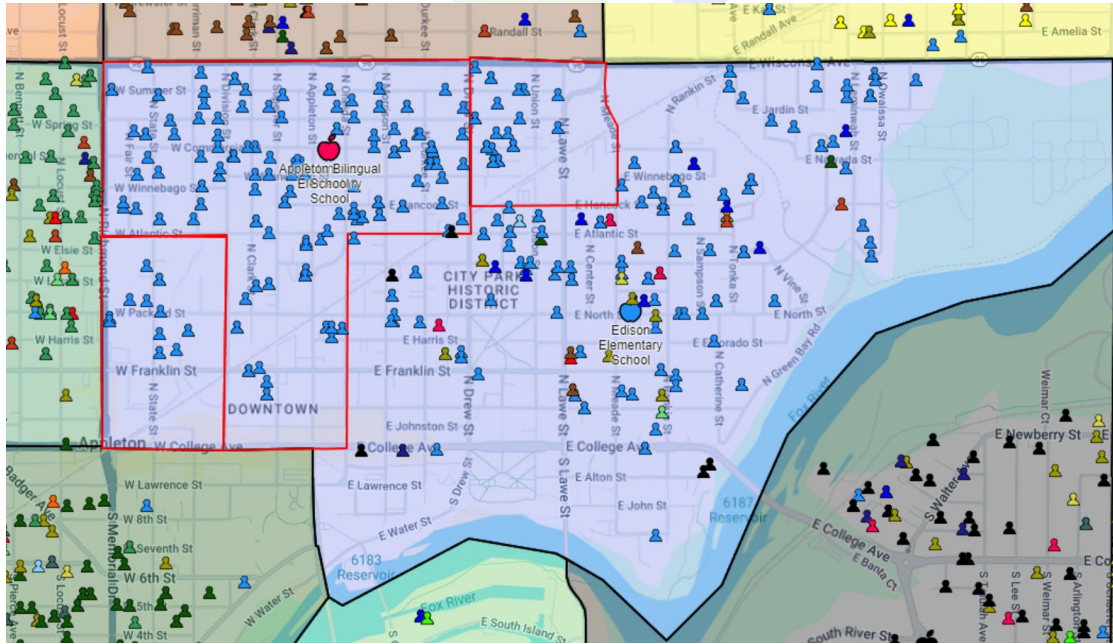
- Franklin's enrollment would be decreased by as many as 10 students



Option #3



Option #3

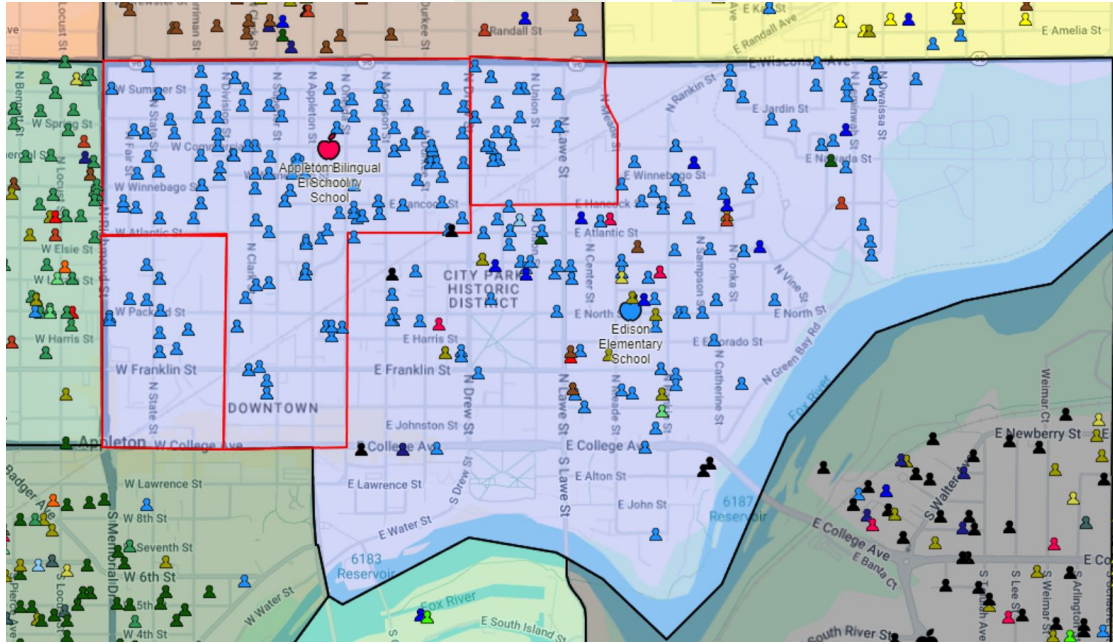


Positives:

- Accessibility - Dunlap students would not have to cross Richmond Street
- Neighborhood integrity - Dunlap students currently cross Richmond Street. The entire Historic Central Neighborhood Appleton area would be included in the Edison attendance area
- Enrollment capacity - Minimal impact
- Growth and Future Development - Minimal impact
- Demographics - Minimal impact



Option #3



Concerns:

- Feeder patterns - Current Dunlap attendance area east of Richmond would change from Wilson/West to Kaleidoscope/North
- Geographic proximity - Edison is .2 miles farther than Dunlap, Kaleidoscope is farther than Wilson, and North is considerably farther than West



Community and Family Input

- **Five surveys were completed**
***Overall support for option #3**
- **One community member attended the January 23rd listening session**
- **No emails or calls were received**



QUESTIONS

