

Item 23-0046: Library Update

Common Council

Wed, Jan 18, 2023 7:00PM

Mayor Jake Woodford 00:17:52

So, with that, we'll move on now to an update on the library. And so well while our colleagues are coming up, to get us started, I'll just point out, we are still working our way through AV issues in Council chambers, as you might have gathered before the meeting, as we're scrambling around. So, what's going to happen is the presentation is going to be visible on the screen here on the floor. And what we'll do is we will manually pivot that screen around so that members of the public can see the pertinent slides on the on the library updates as we make our way through. So, we'll—Yeah, we'll try and slot—move it back a little bit. And we'll get we'll get that taken care of. So just bear with us, we'll do our best. But I want to make sure that folks can see the—especially the important design update slides as we make our way through. But with that, I'll hand it off to Dean and he'll get us started.

Director Dean Gazza (Parks, Recreation, and Facilities) 00:18:56

Thank you, Chair. Good evening, everybody. Good to be back to give you an update on the library. Pleased to be here. And I have with me Colleen Rortvedt, Jason Fisher from SOM whom you've met before, and Ben Bruns and Darrin Pursley from Boldt. So, all of us will be talking tonight to give you an update.

Director Dean Gazza (Parks, Recreation, and Facilities) 00:19:19

As you recall time goes by a little bit quicker than we want it to sometimes, but on September 28 the bids are open for the Appleton Library and we're over bid. We made a conscious decision that we were going to stay within budget, and we were going to work to a point to get the scope reduced but yet work to achieve all the goals that we set out for the library. Over the past three months we worked diligently to do that. To meet the budget and retain them goals and to see the vision through.

Director Dean Gazza (Parks, Recreation, and Facilities) 00:19:50

The scope modifications were not easy decisions as you could imagine and much discussion and thought took place. We met with various contractors, vendors We monitored the state of the market. We tested vary estim—various estimates, and we tested various concepts to come up with an awesome design that you're going to be shared with tonight.

Director Dean Gazza (Parks, Recreation, and Facilities) 00:20:13

Regarding two major decisions, one of the notes I wanted to point out was one of those was discussion over geothermal, for example. Geothermal is one of those things that we know is not necessary to operate a library, but that was one of the things the stakeholders told us loud and clear that they wanted in this library. So, we did include that; it's still included in the library. And it's the right thing to do, because it has the payback. It's good for you know, we know, for many things, whether it be social responsibility, environmental responsibility, and so forth. Just wanted to point that out, so. So, one of the things about geothermal is that was one of those decisions that had to be made prior to going into bidding, because it has such an effect not only in the boiler room, but it has an effect on the design, also. So, I'm hopeful that you support that decision.

Director Dean Gazza (Parks, Recreation, and Facilities) 00:21:10

Tonight, SOM will share with you the updated design, and Boldt will discuss current market conditions. It's our goal to finalize the updated design and get this thing out to bid to our contractors as soon as possible. And we're working diligently to do that.

Director Dean Gazza (Parks, Recreation, and Facilities) 00:21:25

A new bid date is not been established, but I can assure you we're working, you know quickly towards that. We definitely want to move into this library sooner than later. For example, SOM is working with the sub consultant right now. And Boldt is also evaluating some of the steps and time and some of the crucial steps to get to the bid the bids prepared.

Director Dean Gazza (Parks, Recreation, and Facilities) 00:21:49

You know, overall inflation, you know, it has impacted our daily lives; we've seen that every day. No different with this project. We definitely cannot buy as much as we did before. But the awesome thing about this project is, hopefully, you'll be as excited I was after I as we worked through the updates and got to a design that is still exciting and also one that accomplishes all the goals for the library. And that that was most important.

Director Dean Gazza (Parks, Recreation, and Facilities) 00:22:21

I'm going to turn it over to Director Rortvedt, but available for questions now or after the meeting. So, Director Rortvedt.

Executive Director Colleen Rortvedt (Library) 00:22:35

Hi. I really want to thank the Council, the trustees, our staff, members of the community, our volunteers, potential donors, for your patience as we work through these revisions. As the library director, I really want to emphasize that I am really excited about the modifications and pleased that we could reduce the scope through efficient design without damaging library functionality. There are sacrifices that have to be made, but we have always committed to bringing this project in, focusing on the established budget that's been made. And so, we understand that those sacrifices have to be made.

Executive Director Colleen Rortvedt (Library) 00:23:12

Throughout our time working on this, we've had a tremendous amount of input through the library building project advisory committee, numerous focus groups, open community meetings, the trustees, Council feedback, and then we've heard from many individuals who just took an interest in specific aspects of the project. And so, Jason's going to do a really nice job bringing us back to some of those original priorities because those haven't been abandoned through this design.

Executive Director Colleen Rortvedt (Library) 00:23:40

So, the true heart of the library is people. It's not a building. It's about the relationship between the staff and the community. It's what makes every library unique. You're not going to find two libraries that are the same. But the building is an essential tool to making sure that we can accomplish what the community wants when they walk through our door. And every single person that walks through that door has a different need.

Executive Director Colleen Rortvedt (Library) 00:24:05

So, I'm really excited to say that this design has been responsive to our community's feedback, and is going to serve us really well for the next several generations. So, with that, I'm gonna hand it off to Jason Fisher from Skidmore, Owings and Merrill.

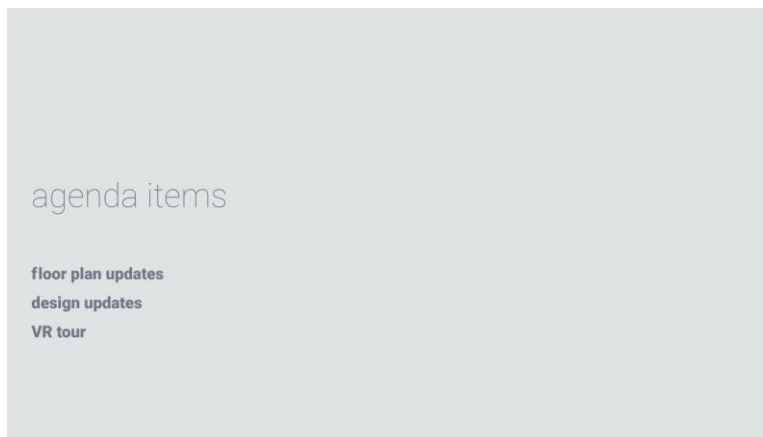
Jason Fisher (Architect - SOM) 00:24:26

Is it on? Yeah. Okay, great. Okay. Hello, everyone. I'm Jason Fisher. I'm an architect at Skidmore, Owings and Merrill. Great to see many of the familiar faces here. Without further ado, we all know the background. And it's actually very inspiring for us that everyone pays so much attention and care so much about such a critical building in the community. So, I'll jump right in and explain the very latest design.



Jason Fisher (Architect - SOM) 00:24:55

A couple of topics that we'll cover, we're going to walk through some of the updated floor plans. We're gonna see some of the exterior design updates. And then we'll end with a little bit of a VR tour to kind of show you what it, like, feels like to walk through the space.



Jason Fisher (Architect - SOM) 00:25:09

Portions of the VR tour are going to be conceptual. I know, we've been on a couple of VR tours before, and there's been kind of an increasing amount of detail through the design. What you'll see now is a representation of the volume of the space and a lot about the exterior facade. And then the, the floor plan will be part of the kind of the organization and function of the of the building itself.

Jason Fisher (Architect - SOM) 00:25:34

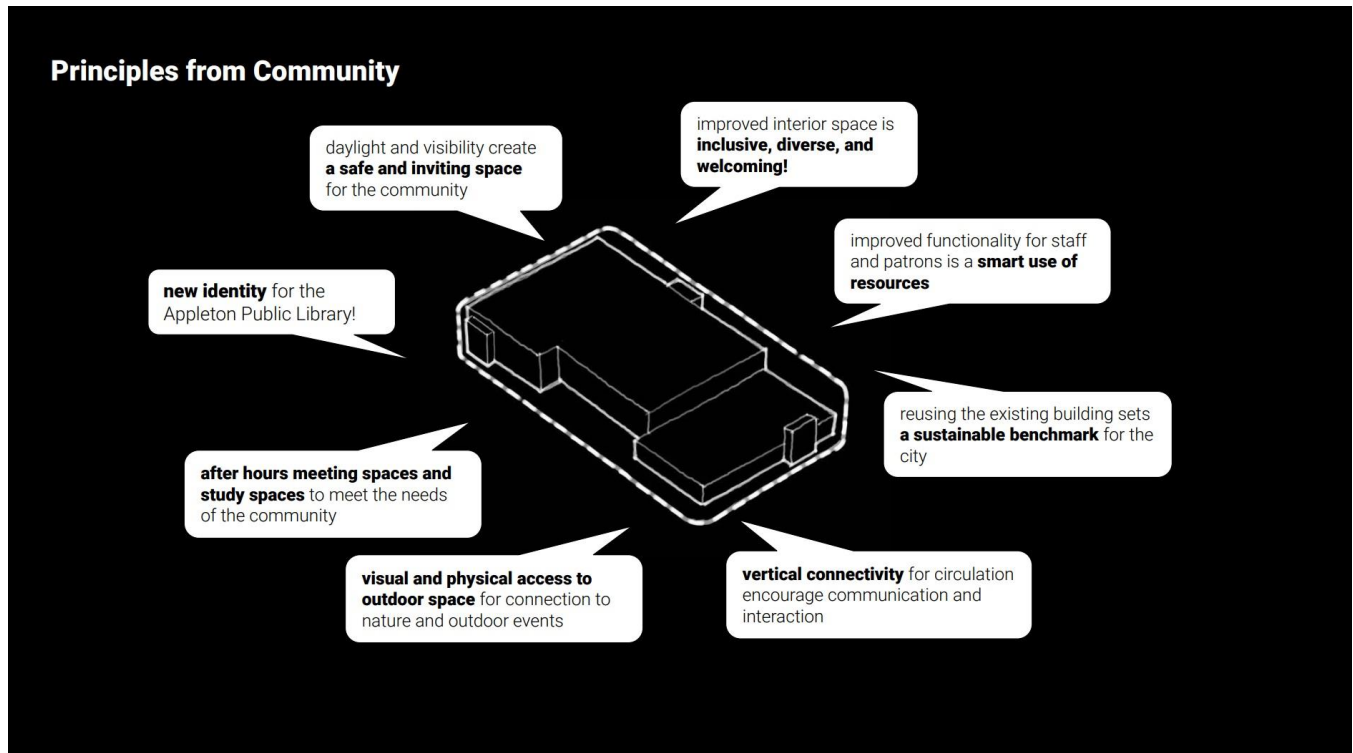
Okay, so, as Colleen mentioned, we wanted to go back to some of the principles that we heard from the community through various focus groups, listening sessions, and, and otherwise, many touch points with various members of the community.

Jason Fisher (Architect - SOM) 00:25:49

This slide may seem a little bit familiar because this is a similar slide that we presented previously, where we we're trying to list some of the key things that we heard from the community members. A safe and inviting space for the community, a lot of daylight, improved interior spaces that are very welcoming and bringing in a diverse population.

Jason Fisher (Architect - SOM) 00:26:10

Another key component was the smart use of resources. Dean mentioned that with geothermal and sustainable sustainability goals that we heard loud and clear from the community that we're that we're trying to maintain as we redesigned the building.



Jason Fisher (Architect - SOM) 00:26:25

Some of the physical things about the building itself. The previous building was a lack of vertical connectivity. Hopefully, you'll see in some of the design updates, that we're really emphasizing that vertical connectivity and improving the overall flow and function of the building itself. And then visual and physical access to the outdoors is another key component.

Jason Fisher (Architect - SOM) 00:26:47

We have a bunch of after-hours meeting spaces, community spaces that are above and beyond certainly what the library currently has, and a key component that we tried to maintain as much as possible as we undertook the redesign.

Jason Fisher (Architect - SOM) 00:27:04

And then, of course, there's a new identity for the public library. So, facade and the overall welcoming nature of the design. We hope that you'll see that we've maintained that as a key component along with all the other principles that you see on the screen.

Jason Fisher (Architect - SOM) 00:27:20

It's just words on the screen for everyone back there. So hopefully, that that was a good explanation. And then we can we can turn once we see some imagery.

Jason Fisher (Architect - SOM) 00:27:30

Okay, before we get into the floorplan updates, we don't want to leave everyone on edge. So, this is the new image of the library. A couple of things to note here. We're building an addition on top of the single-story wing, which we were just discussing earlier, that it gives a really kind of balanced and stately sort of facade to the whole project. Gives it a little bit more substance and weight on that parking lot. And then kind of the face towards the community along College Avenue as you're approaching the building. So, we think that's something that's a really, really nice improvement in a way on the previous design, balances the overall facade and gives it a lot of presence on the south facade.



Jason Fisher (Architect - SOM) 00:28:16

This one might be one where we would want to...

Mayor Jake Woodford 00:28:18

Yeah, definitely. Cory, Jeremy, could we get a pivot?

Jason Fisher (Architect - SOM) 00:28:21

And then if you guys can see.

Jason Fisher (Architect - SOM) 00:28:38

So, with the memory of the images for you guys in the image here, you know that that atrium, the this kind of center of the of the existing building, was an atrium that wasn't really functional. And what the new design has is actual occupied functional library space along with vertical connectivity in that kind of center volume. So, it's

kind of in the same language of the previous building, but really making it much more transparent, more usable, and then really bouncing the entire facade.

Jason Fisher (Architect - SOM) 00:29:09

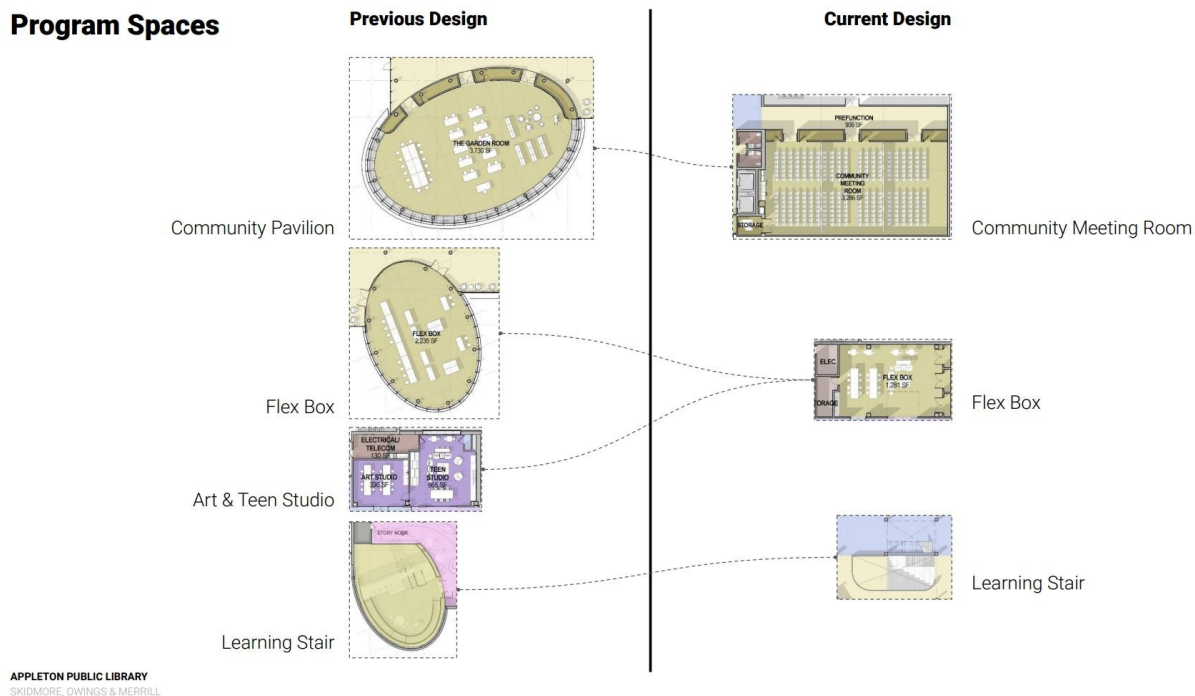
What you don't see and what you'll see a little bit in the in the VR tour, once we go through that, is that this does align with the previous design of the other facades on the other sides of the building. A lot of the images that you see kind of on the Post Crescent and other media outlets really focus on the main facade, but there are certainly other facades that that the public experiences, that the community experiences, and also a lot of windows across the rest of the facade that bring daylight into the space. So, the design update also kind of ties into some of that existing design that we had previously.

Mayor Jake Woodford 00:29:45

As you can see, it's a bit of an operation so we'll only do this a couple of times. **[Note: he was referencing moving the video screen.]** And then we will make sure that the presentation slides are available for the public. So, if you miss a detail here it will be made available. All right.

Jason Fisher (Architect - SOM) 00:29:59

Okay, so, we talked about a lot of the program spaces, the community spaces, study spaces, meeting spaces that we were incorporating, and was very critical to improve functionality of the library. What do you see on the left-hand column are the spaces in the previous design. And then what we're trying to do is draw the line across to the updated design and make sure we're accounting for some of those key critical spaces.



Jason Fisher (Architect - SOM) 00:30:26

So, we had a big community meeting pavilion subdividable into three spaces in the old design. That's what we have in the current design as well. It's taken a little bit more rectangular shape, of course. That's the volume that sits on top of the second of the existing single-story space. But it has a very similar set of, of, of program elements, including operable walls to be used in various times of the day.

Jason Fisher (Architect - SOM) 00:30:54

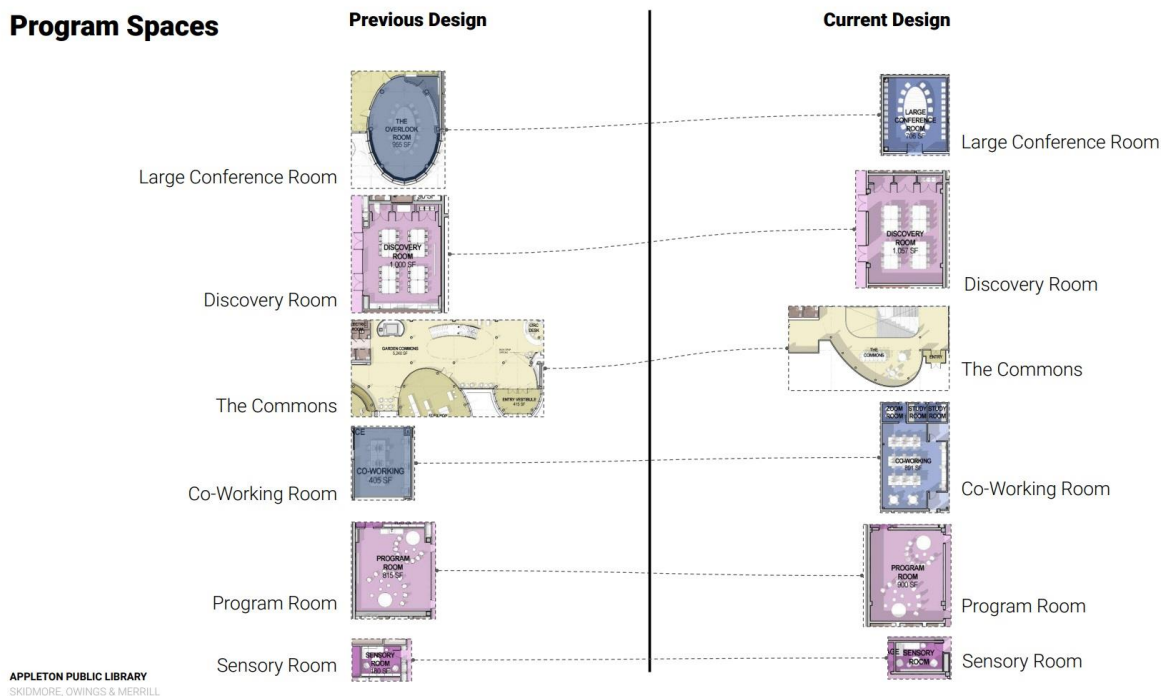
One of the maybe you could call it a compromise, but one of the efficiencies that we found was that we had a Flexbox space, and a couple of sort of smaller teen and art studios. And a lot of those functions happen are very similar and they may happen at different times of the day. So, we've actually combined that into a single Flexbox space that is kind of multipurpose and will be kind of engaged in all hours of the day.

Jason Fisher (Architect - SOM) 00:31:20

The learning stair, which you guys most likely remember, hopefully, will be also reincorporated into the new design, again, with a slightly different configuration. In this case, the learning stair kind of sits within the volume of the atrium, as you remember it previously in the existing library. So again, another component where we can kind of vertically connect up and down and bring daylight into the lower level.

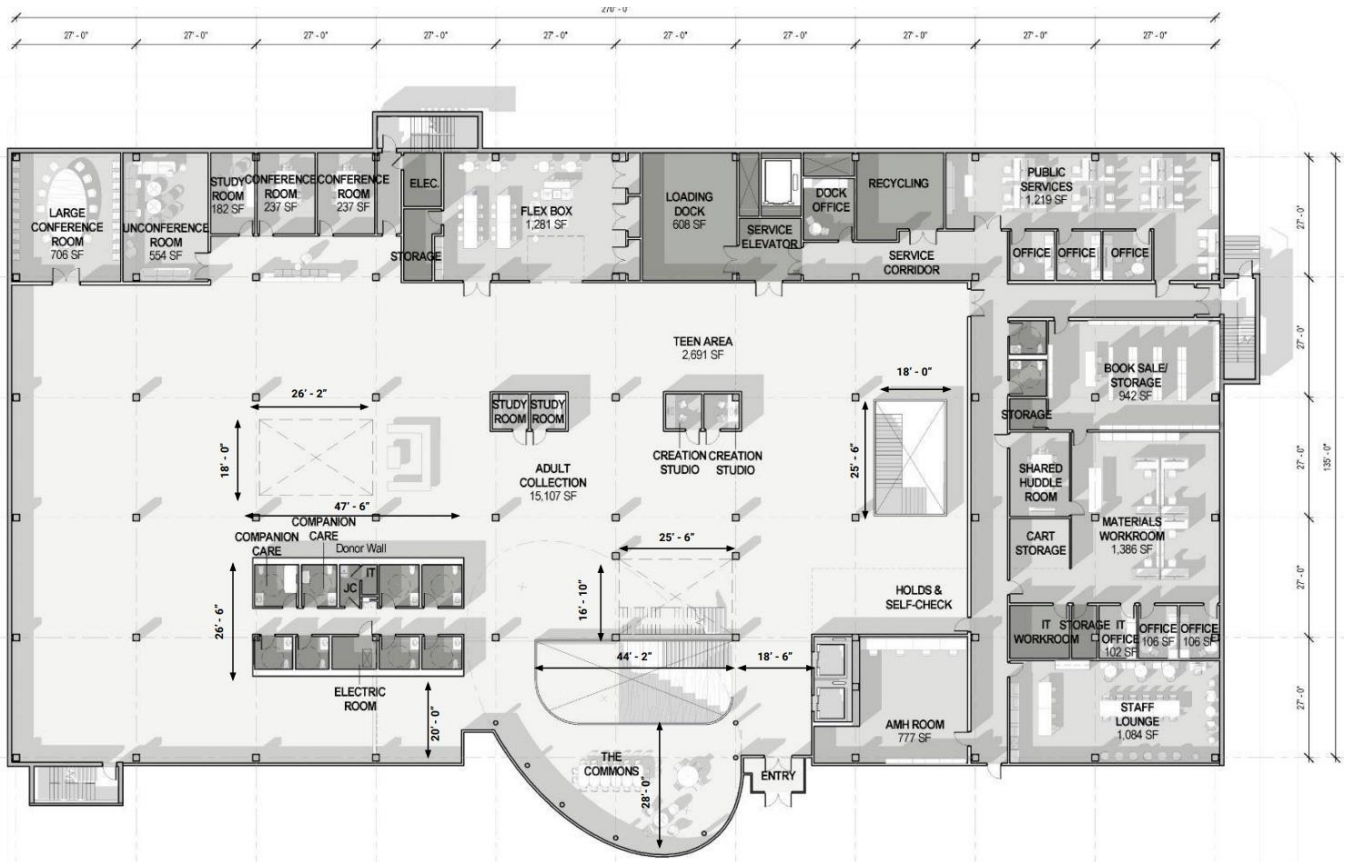
Jason Fisher (Architect - SOM) 00:31:46

And, of course, we accounted for as many of these spaces as we possibly could from the previous iteration of the design to the updated design. So, things like large conference rooms, all of the program spaces, key program spaces for the children's collection are all remaining. So that's the discovery room, the program room, the sensory room—really key spaces that aren't part of the overall collection space, that we know from our conversations with, with library staff and the community that's really critical to the to the function of the children's collection itself. For those here, it's just a side by side of the old and new design.



Jason Fisher (Architect - SOM) 00:32:26

So, here's the ground level, I'm going to try to walk through it kind of in general terms, and then point out some of those spaces that we previously saw. We have our main entry, which is coming in here, a very similar location to the current building, and then also to the to the previous design. We have a whole bar of staff space that remains largely unchanged that wraps around that improve the functionality of the library itself. You have a bunch of collection space, the adult collection, in this case, with, again, individual accessible restrooms all the way across.



Jason Fisher (Architect - SOM) 00:33:01

Upon entry to the building, you are—you can easily access the pair of elevators that take you up and down. We think, again, this this is probably an improvement over the previous design where you have very quick access vertically in the building. And this is a key component when we go to the second floor to talk about access to that community meeting pavilion. In addition, it's a in a way an improved access into the children's collection where you kind of enter the children's collection into the body of the space as well.

Jason Fisher (Architect - SOM) 00:33:32

There's a series of meeting spaces of various sizes on in the upper left corner. This is the flexbox that we talked about. And just for the accounting that we previously went through, this is kind of a colored plan to show all the different kind of function. A lot of the yellow color is more public function. The kind of maroon red color is all back of house staff space. And then blue is all the space dedicated to collections, to study spaces, to meeting spaces that that's free to use for the public.



Jason Fisher (Architect - SOM) 00:34:09

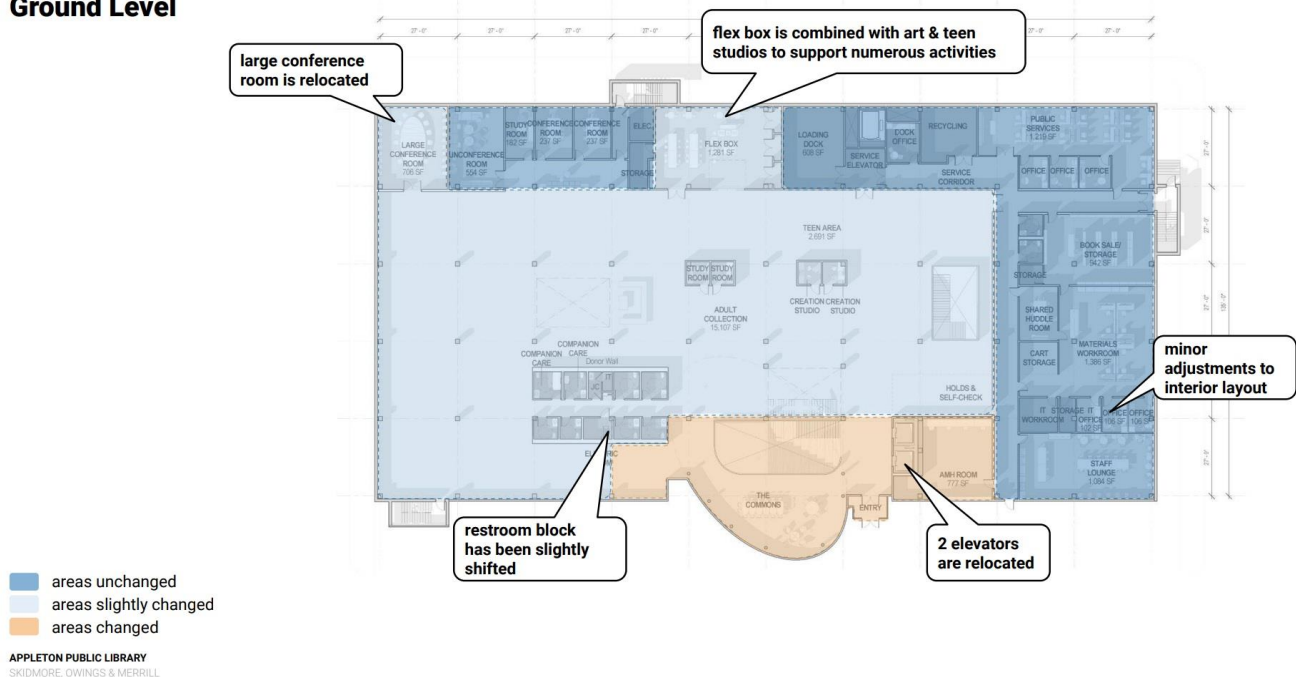
Just a highlight of some of those repositioned elements from the previous design. So, the flexbox has been repositioned into the body of the plan. In a way it's a little more central and usable for people that are wandering through the collections. We have a new common space, which is that volume that you saw from the exterior.



Jason Fisher (Architect - SOM) 00:34:30

We wanted to kind of diagram for you guys essentially what has changed versus what has not changed in from previous design to new. It's kind of illustrated here where most of the blue areas—the dark blue is very, very minor adjustments almost no change at all. The light blue is essentially the same sort of layout as we had previously. So just on first glance, you know we've reshuffled some of that program space in the center close to the main entry, but the majority of the rest of the plan has remained almost the same or slightly changed as from previous.

Ground Level



Mayor Jake Woodford 00:35:11

Jason, just if you wouldn't mind going to the previous slide. You ran through three, four slides—if we could just turn this again, just to give the final this final image, which is helpful for illustrating what's changed. Thank you.

Jason Fisher (Architect - SOM) 00:35:29

So just a quick recap for those over here, you know, the blue—light blue or dark blue—is essentially the same allocation of space. The yellow in the middle, the orangish color in the middle is really where we made the majority of the changes from previous to new design. And that's just an improved and in a way improved flow through the building and a reshuffling of some of those spaces. You can see a little bit of the slightly change portion and light blue means a relocation of the Flexbox for example, as one of the larger conference rooms.

Mayor Jake Woodford 00:36:04

Thank you.

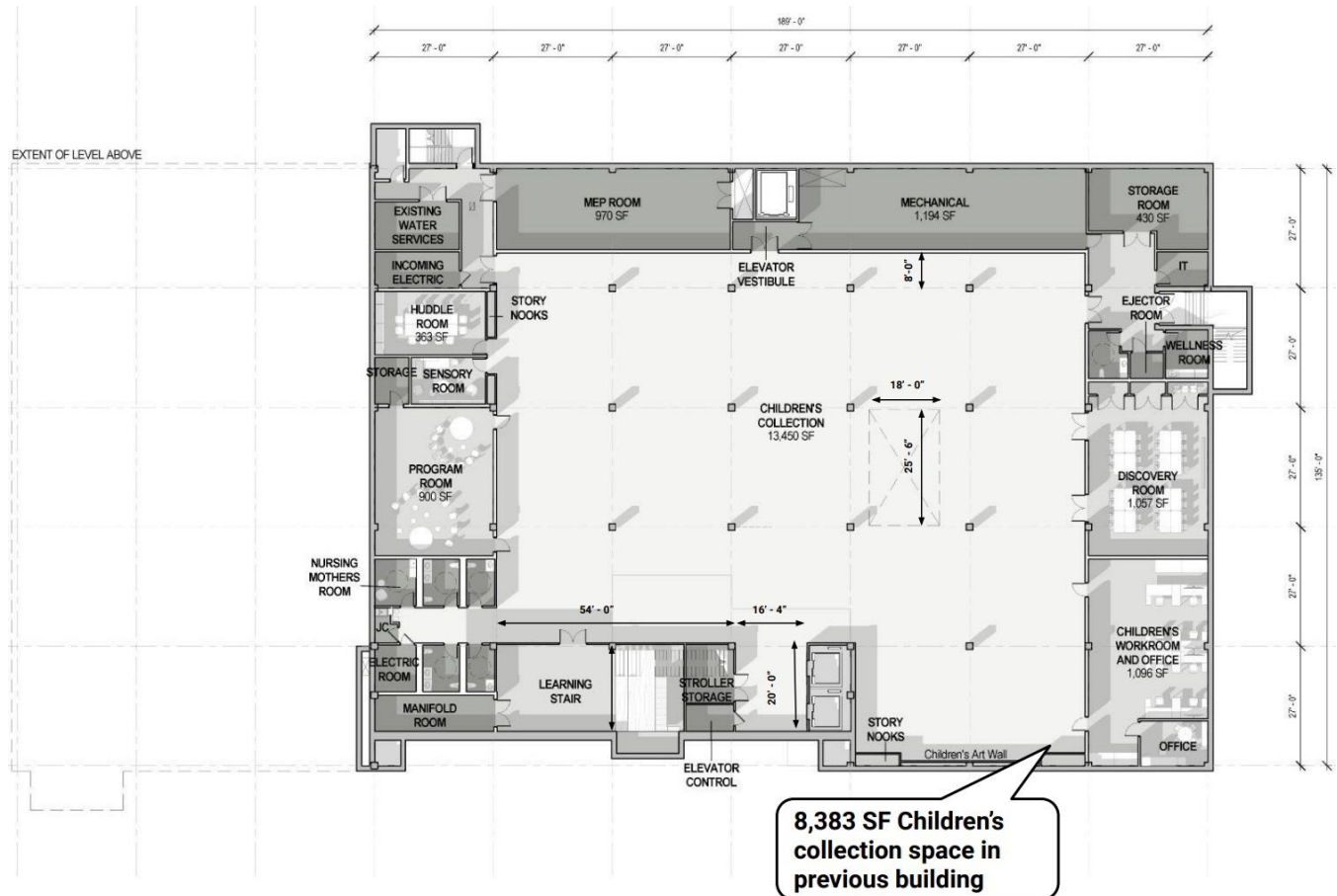
Jason Fisher (Architect - SOM) 00:36:17

Okay, going down to the lower level. This is the children's collection. The majority of the children's collection has remained the same. We have as much daylight as we can possibly get into this lower level through skylights, through the learning stair. We have our program room on the left-hand side and the discovery room on the right-hand side—some of those critical spaces for children's that I mentioned previously. And then we have a

very flexible and a little bit more open than the previous design as well, less obstructions, for the for the children's collection itself.

Jason Fisher (Architect - SOM) 00:36:55

The this very latest design represents a decrease in the overall square footage of the previous design. But it's really important to remember that, for example, the previous children's collection in the old library was a little over 8000 square feet for the collection. And what we're providing here is a 5000 square foot increase. You may ask how does that happen. You're not exactly adding that much space to the to the building. But what we are doing is increasing the use of space that was otherwise underutilized in the previous building.

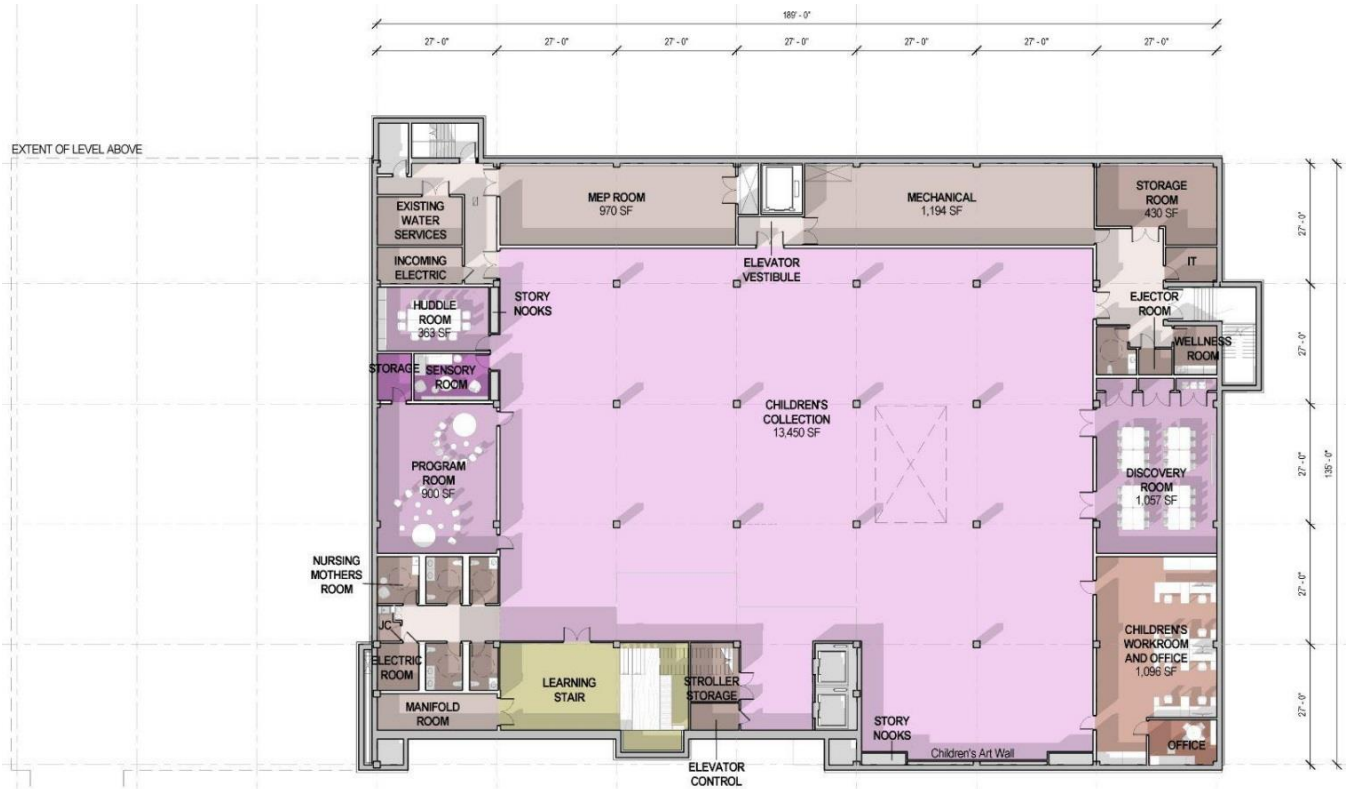


Jason Fisher (Architect - SOM) 00:37:28

So, you guys may have images of the larger meeting space in the lower level. There's a lot of storage space that kind of remained largely unused. And then there was staff space and offices that were that were very poorly laid out. So, what we're trying to do here is to gain as much functionality out of the spaces that we have to make sure that we're accounting for all the functionality that from previous to new design.

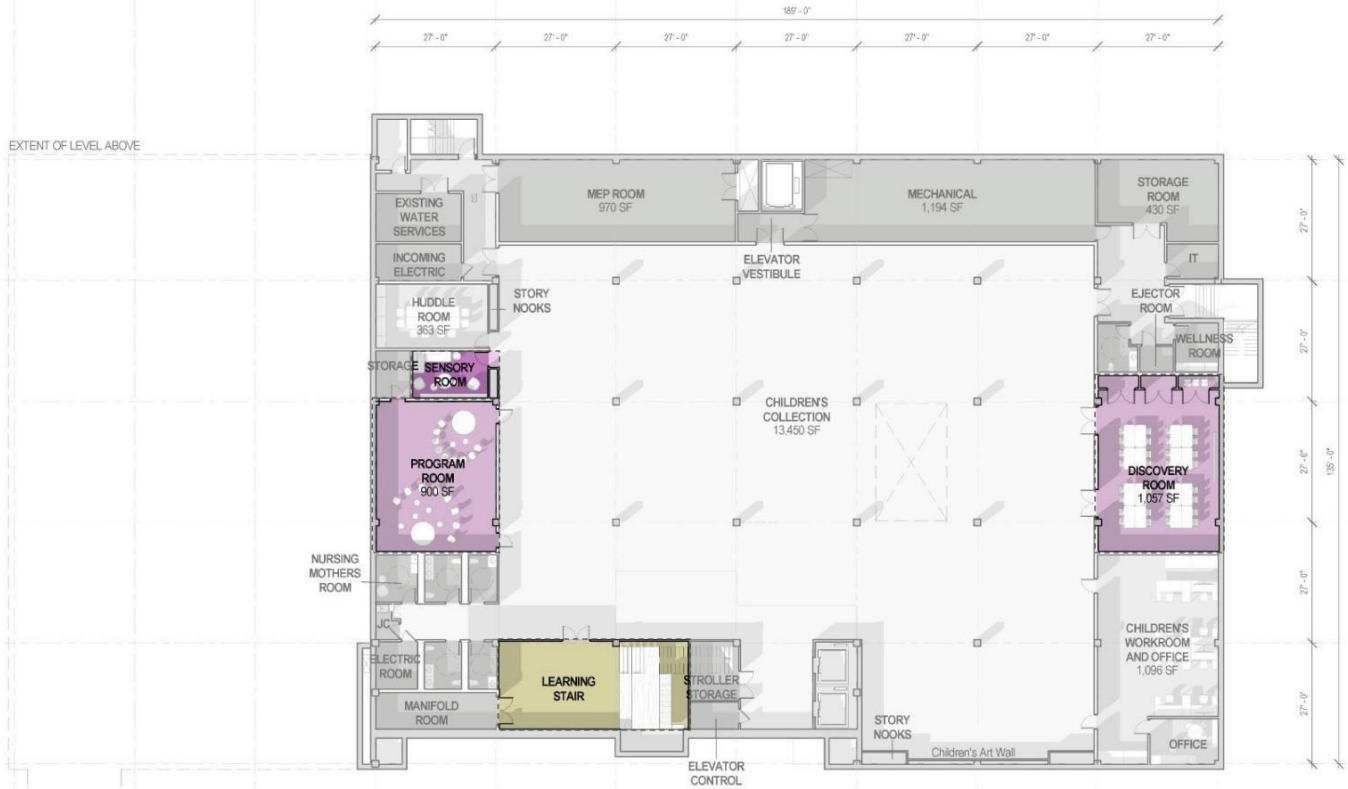
Jason Fisher (Architect - SOM) 00:37:55

Again, a colored plan for some of the staff spaces you can see have been allocated here in the lower right-hand corner. We have our learning stair coming down and kind of the middle of the building here. You have elevator access right out onto the children's collection there. And then you have a series of program spaces sensory rooms and a small meeting room on the left-hand side and then a bar of mechanical space on the north. Again, some of the key spaces that we knew that we had to maintain as we went through the redesign process.



Jason Fisher (Architect - SOM) 00:38:33

Here you know like the reorientation of the elevators and the learning stair is really the major change here. And this is again taking advantage of the existing openings, the existing atrium space in the building and re locating the elevators, you know essentially more central to the plan to improve access and functionality here.



Mayor Jake Woodford 00:38:57

Alright, let's turn that one. This is...

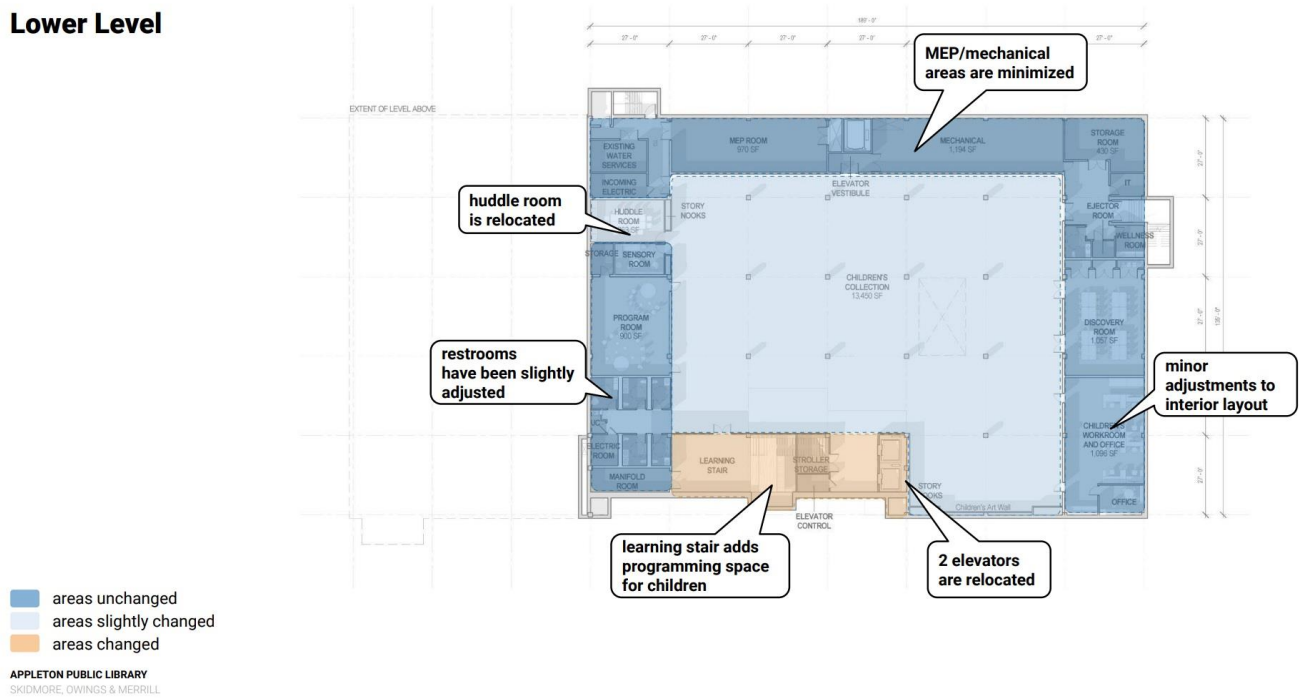
Jason Fisher (Architect - SOM) 00:39:01

Can I? Is it a one-person job?

Jason Fisher (Architect - SOM) 00:39:10

So again, the orange color is really constitutes the majority of the reshuffling of program here.

Lower Level



Mayor Jake Woodford 00:39:21

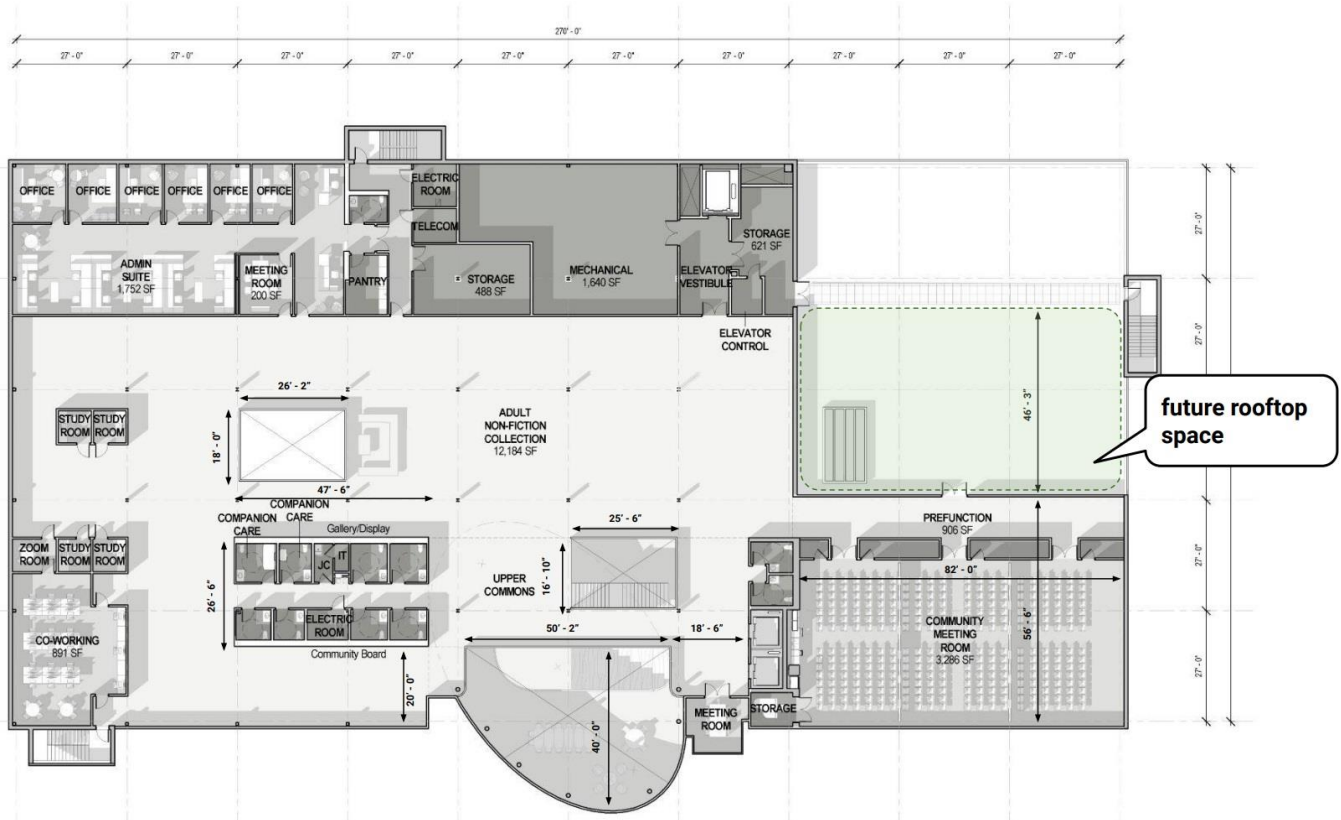
Okay, thank you.

Jason Fisher (Architect - SOM) 00:39:34

Okay, upper-level plan. A couple of notes here. Really the biggest change which you'll see in a similar diagram that we just looked at for the lower level is we have a large community meeting space located above the existing building. This is adjacent to a potential future rooftop outdoor space. We talked about connections to the outdoors. And there's a pre-function here so that as community events are happening, there's a space together before the event starts and space to hang out and discuss after.

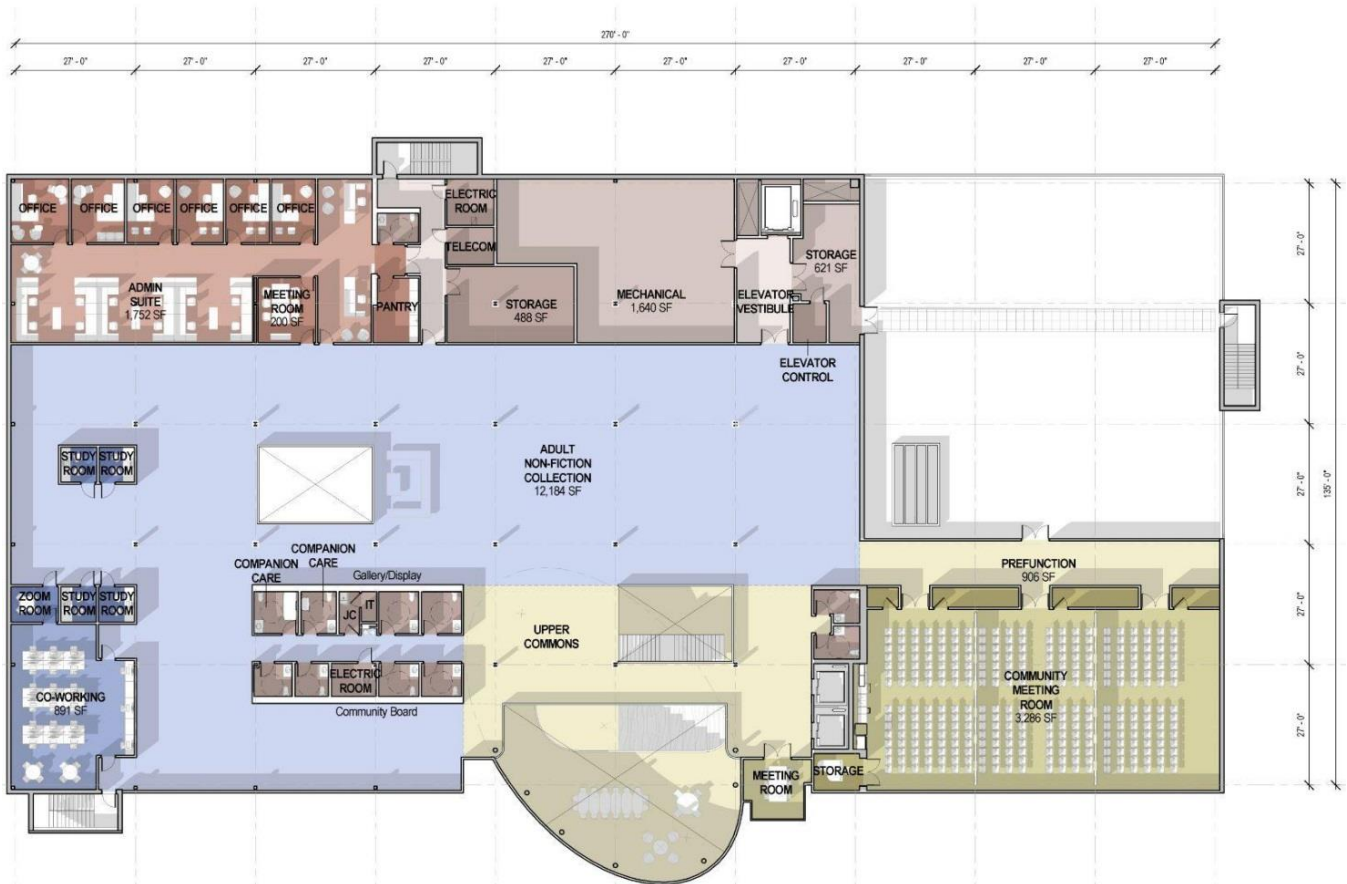
Jason Fisher (Architect - SOM) 00:40:08

This is a key function that the library, the old library does not have. You kind of arrived on those stairs and you're either in the room or you're not. So here, it's kind of a pre-function space, which is very common, and it greatly increases the functionality of those spaces.



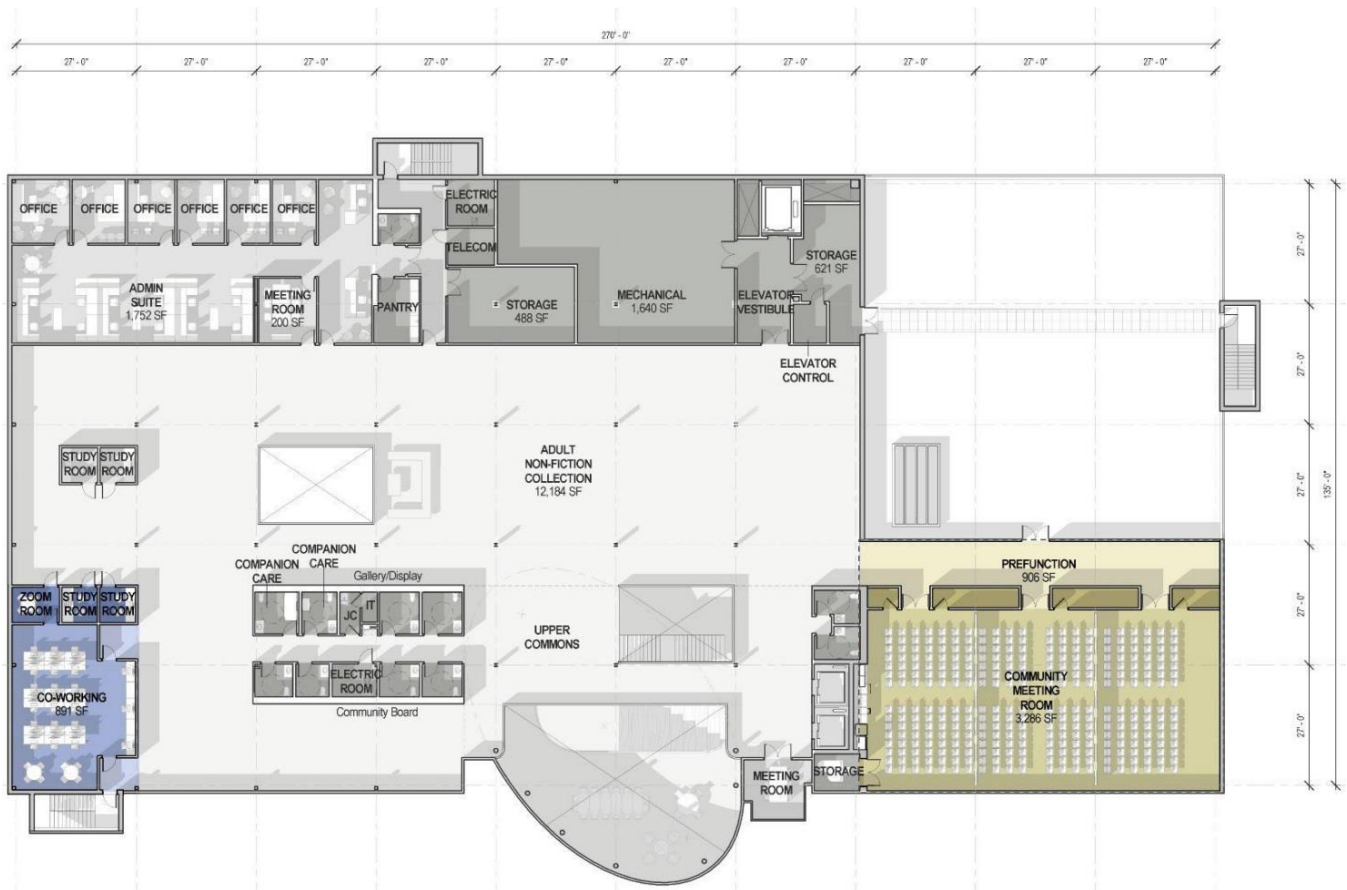
Jason Fisher (Architect - SOM) 00:40:27

We have administrative suite in the upper left-hand corner. We have the nonfiction collection that's spread throughout the majority of the plan. There's a co working space, again, another program element that that remained in a similar location to the previous design, but it has been slightly reconfigured. We have a pair of elevators here that are right off of the main entry below that take you very quickly around to the community meeting space itself.



Jason Fisher (Architect - SOM) 00:40:55

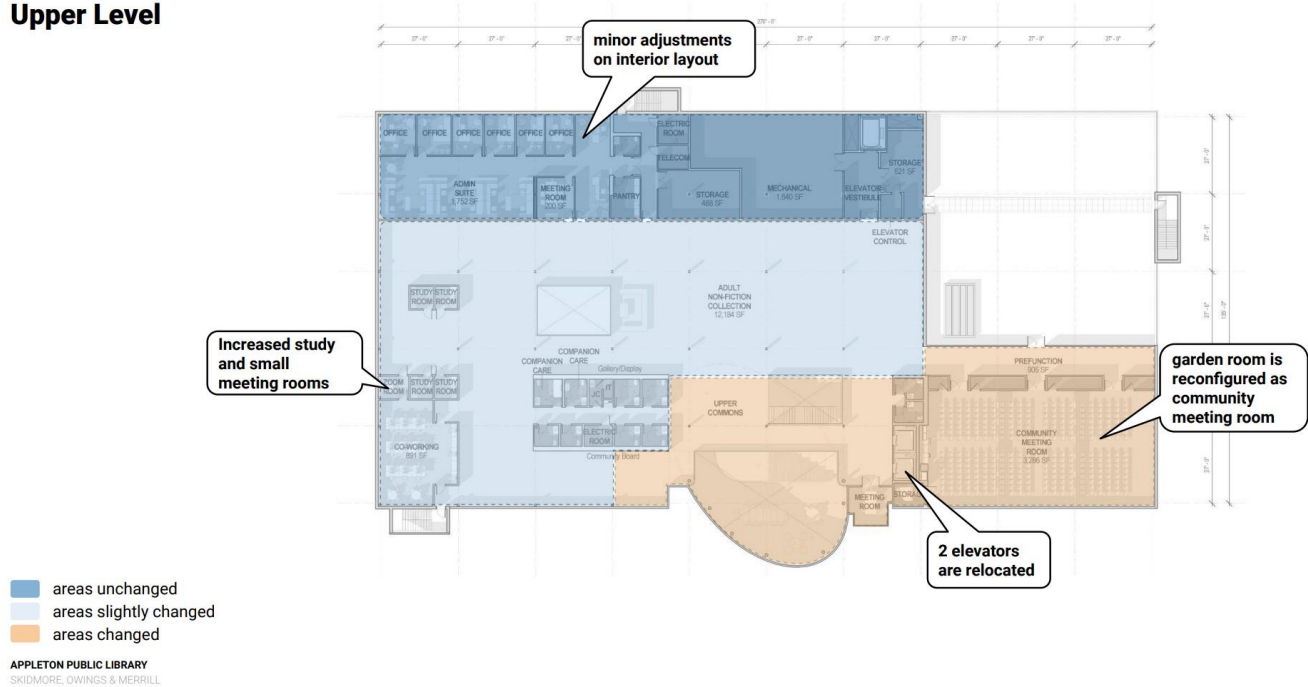
Another important thing that we really tried to focus on as we redesigned to make sure we're being as efficient as possible was to reuse the existing openings as much as possible. So, the opening and the stair connecting from the lower level up, which is this box here is the exact same opening as the—when you walk across the bridge, and you get slightly past security and you look up and there's a big volume of space, that's that space there. And we've actually placed a stair there that's very comfortable and easy to connect up. You see visually up into the level above. So again, it's reusing some of the existing building as much as possible, but improving the circulation and functionality. We've added a couple of restrooms, again, accessible restrooms that are very close by the community meeting space knowing that the stack of restrooms for the rest of the collection is a little bit further away. So, there's—what we're really trying to focus on here is providing as much convenience and access as possible to the community meeting space.



Jason Fisher (Architect - SOM) 00:42:01

Again, sort of a color diagram of all those spaces as they are reallocated onto the new plan. A highlight of some of the key spaces that we knew we had to maintain that were kind of additions to what to what the previous library did not have.

Upper Level



Jason Fisher (Architect - SOM) 00:42:19

And then again, the majority of the changes certainly are the addition of the interior space above the ground floor on this right-hand side of the plan, and then the whole reconfiguration of stairs and elevators and vertical connectivity there.

Mayor Jake Woodford 00:42:38

And then one more time, thanks. [note: he was asking for the screen to be turned so the public could see.]

Jason Fisher (Architect - SOM) 00:42:48

So really the biggest change on this floorplan is the community meeting room here. We wanted to make sure that we're providing easy access both from the elevators or connecting stairs and likewise easy access to restrooms and any supporting functions that those large events have.

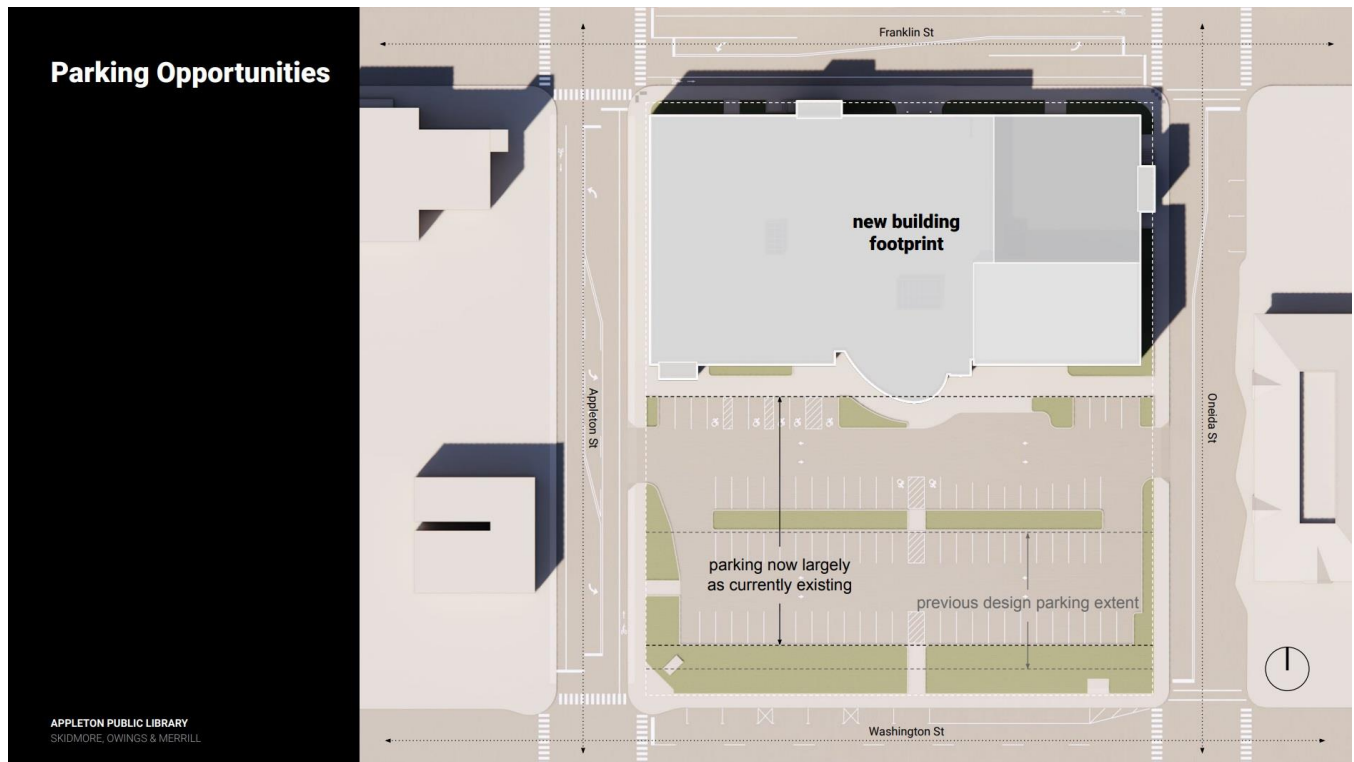
Jason Fisher (Architect - SOM) 00:43:05

Again, just to make the point for everyone in the room, this is a large community meeting room that can be subdivided into three smaller rooms, so that it has use just beyond the big events.

Jason Fisher (Architect - SOM) 00:43:33

Okay, another thing to touch on. The footprint of the building is significantly different than the previous design. There are certainly advantages to the parking layout. The line that you see drawn across here was the extent of the pavilions as they reached out previously, and we've gained back essentially the same parking layout as we

had previously. So, it's it represents essentially the same amount of parking that you have now currently in the parking lot as to what you'll have in the future. And maybe it's just important to turn. [note: he was talking about turning the screen so the public could see the images.]

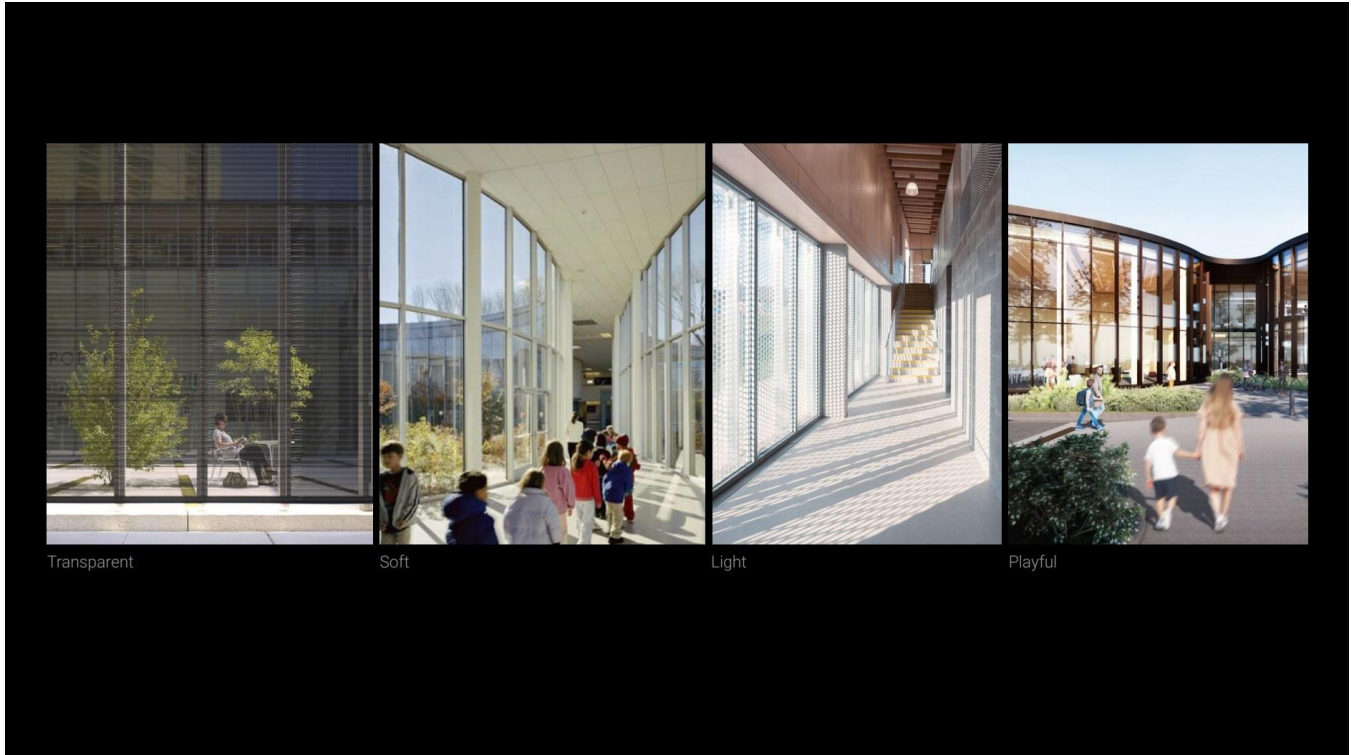


Jason Fisher (Architect - SOM) 00:44:19

So, in general, the parking lot remains almost same as it was previously. This was the line of where the parking started in the previous design. So, we're, in a way, not—we're essentially maintaining as the previous spaces as we had. All of the landscape buffers and everything else remains the same.

Jason Fisher (Architect - SOM) 00:44:49

Okay, so we saw the image of the building. Some of the things from a design perspective from the, the image of the building that we wanted to maintain—something that's transparent, a lot of glass that that brings daylight in, but also visibility out, something that's soft and approachable, a lot of natural daylight that penetrates the space, something that feels very lightweight, and something that's playful and welcoming to the community. So hopefully, you'll see that in the image here and the rest of the VR tour.



Jason Fisher (Architect - SOM) 00:45:23

Just a few close-up shots of some of these items. This is the main entry off of that kind of center sort of pavilion that we have. Up to the upper right is the windows on to the to the community meeting space. And then the reclad of both of those wings on either side is essentially lining up with the existing building.



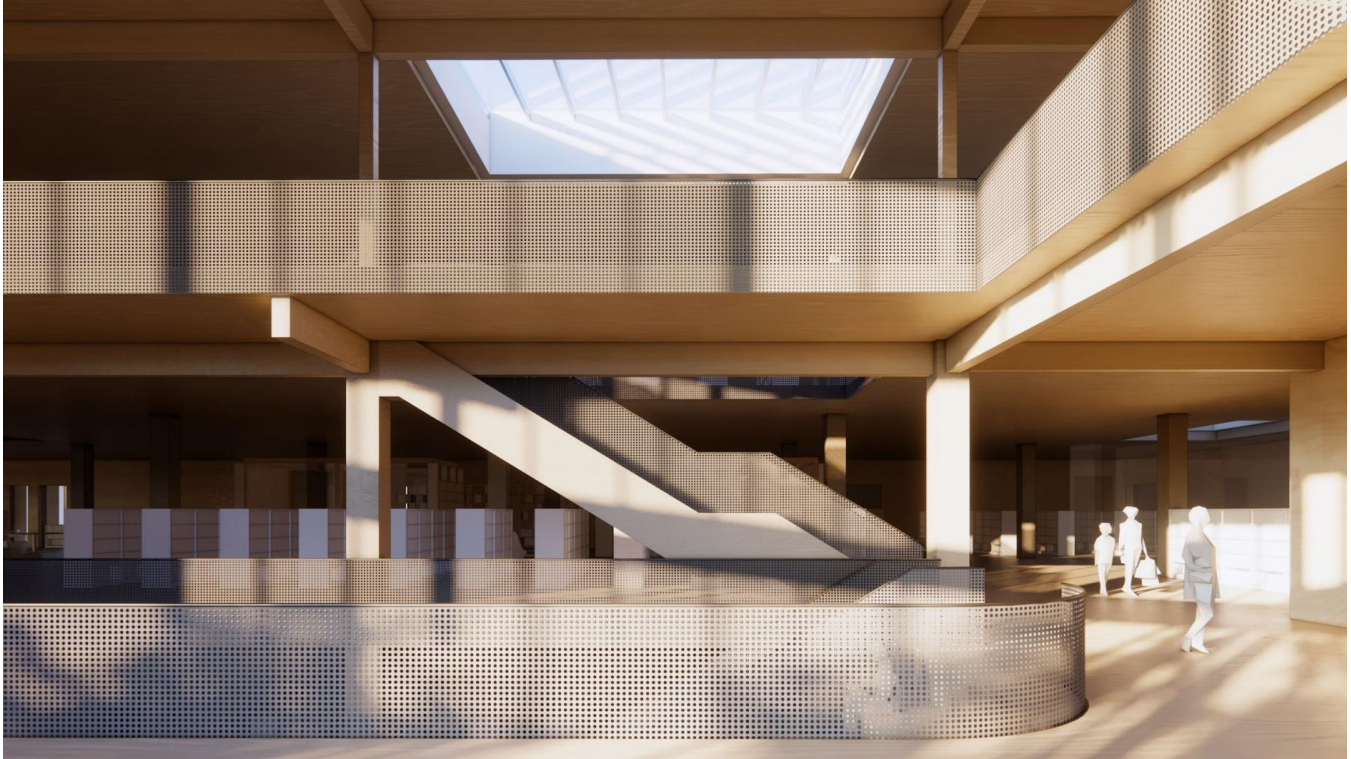
Jason Fisher (Architect - SOM) 00:45:50

Zoomed in detail of the facade. And again, this is something that we'll continue to refine and develop as we as we proceed with documentation of the new design.



Jason Fisher (Architect - SOM) 00:46:03

This is, again, a very conceptual shot of some of the connecting stairs and elevators and skylights that we're maintaining and in the redesign, and we'll kind of take a tour through this, but again, a very conceptual image here.

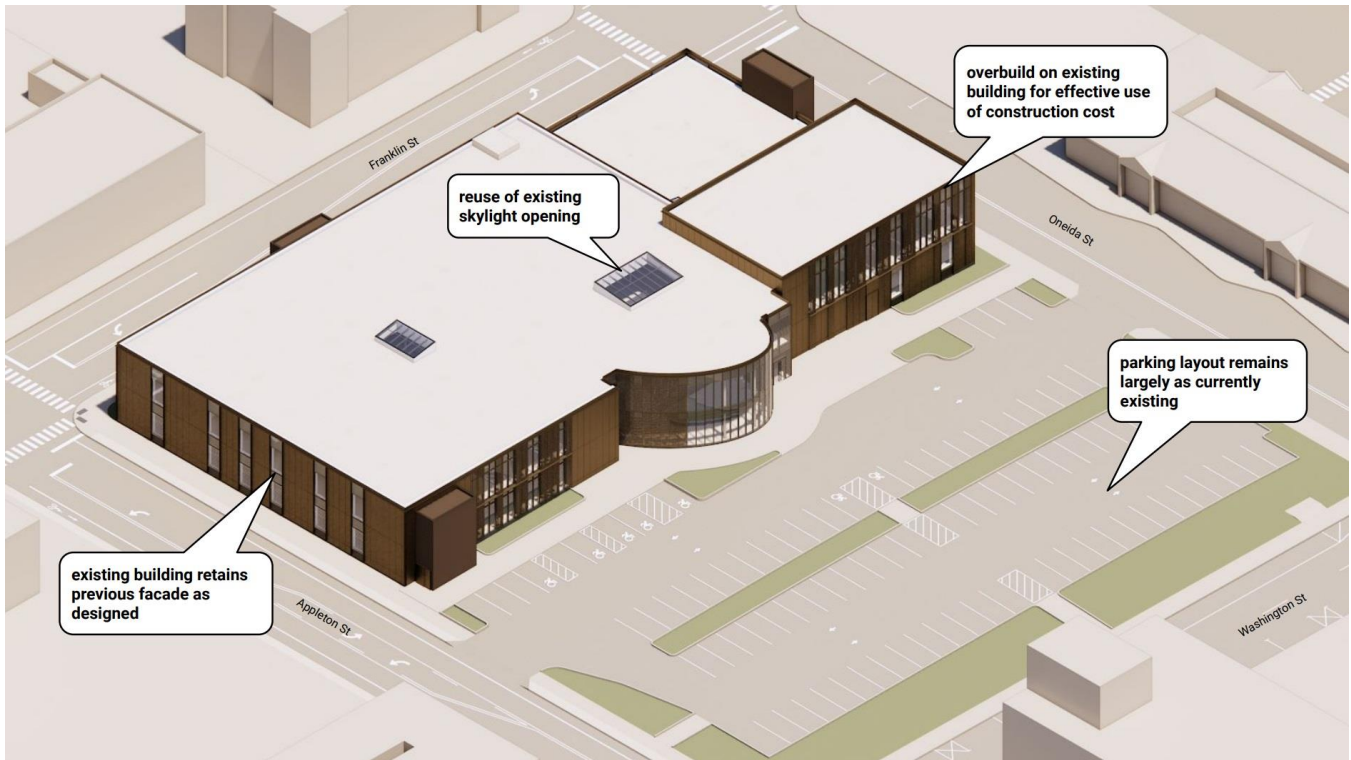


Jason Fisher (Architect - SOM) 00:46:21

So, here's an overall view of that sort of upper-level volume of the community meeting hall. The skylight that's kind of over that view that we were just seeing in the previous shot, is actually the same footprint of a skylight that currently exists in the building. That skylight when you look up in that space is actually covered by a drop ceiling, which in a way prevents light from getting in. So, we're going to drastically improve that with the new skylight.

Jason Fisher (Architect - SOM) 00:46:51

You see a little bit of—and we'll see it in the tour of the other facades besides the south facade that kind of continue that language of verticality of that of that kind of prominent presence across the site.



Jason Fisher (Architect - SOM) 00:47:06

Okay, and with that, we're gonna jump to the VR tour.



Mayor Jake Woodford 00:47:11

And I think we'll just we'll just say off the bat, we'll do two run throughs of the tour. It's a little bit shorter than previous ones. That's okay.

Jason Fisher (Architect - SOM) 00:47:19

Yep. Okay, so just to give you a little sense of kind of the approach to the building, you may park in the parking lot, you're gonna walk from, from one of the spaces that you've chosen. Here, this is kind of the main commons area, it brings a lot of daylight into the space, it connects all three levels. We'll take a look at that in a second.

Jason Fisher (Architect - SOM) 00:47:41

Here is kind of a small drop off area. So, if you're dropping off, you'd be able to pull your car up here for a quick drop off into the main entry. It's not shown in this model—again, it's a little conceptual—but there would be an exterior book drop right here. The idea is that we would have some easy temporary parking spaces on this side to quickly access the book drop. And then you see on the upper portion here—and we'll take a tour through there—but that's the large community meeting hall.

Jason Fisher (Architect - SOM) 00:48:14

You can see on the left-hand side, some of the new facade on the south. What we've done is actually maintain that stair tower that currently exists on that southwest corner. Given the overall composition of the design, we think that these vertical elements are complementary to everything and it's a simple reuse of the existing facade.

Jason Fisher (Architect - SOM) 00:48:38

I'm going to kind of quickly fly into the main entry. So here, you're—we're approaching that sort of main entry vestibule. If I were to just take a turn to the left, once I entered, this is that large commons area. So, this space right now is only represented with a few pieces of furniture, but throughout the day, and even different times of the year, there's going to be different setups there, maybe gallery space, maybe collection space, maybe an event happens there. Maybe there's a large community meeting table there.

Jason Fisher (Architect - SOM) 00:49:11

Right behind us in the view is actually a pair of elevators. We're going to turn around and look at those in a second. But what you see in front of you is the learning stair down to the lower level, and then a stair up to the upper level. I'm just going to kind of hover over here a little bit and take a look back at some of that space.

Jason Fisher (Architect - SOM) 00:49:34

So, this is kind of a key driver that we think is really a positive improvement on the design. What do you see here is all the way down to the lower level, the children's collection, you see up to the upper level and all of the nonfiction collection. You see beyond the stair and beyond that sort of line of columns there, all of the collection space on the ground level. So, this is really a moment right upon entry that you can kind of decide where you want to go, see things that are happening throughout all levels of the library, and be engaged with all the activity.

Jason Fisher (Architect - SOM) 00:50:11

Another thing that we think is a really positive benefit here is quick access to a pair of elevators. So, in this case you would walk in, and if you are knew—if you knew you were going to go to the community meeting space, for example, you may just go call the elevator (and then I'm just going to pretend like we're flying up) arrived to the

second floor, walk around the corner here, and then you see the pre-function space that connects to the to the large community meeting space.

Jason Fisher (Architect - SOM) 00:50:42

For the sake of continuing this little journey, we can walk into this room. And you see, in this case, a setup of the entire room as one big room with some windows and view out to the south.

Jason Fisher (Architect - SOM) 00:50:57

Now along those column lines, there would be operable walls. And the chairs, of course, can be reconfigured so that there could be three individual meeting spaces.

Jason Fisher (Architect - SOM) 00:51:09

This pre-function here does have an opportunity to connect with a rooftop terrace, just to the right. And then of course, it connects back to the rest of the collection on the upper level. And all the same sort of mixture of bookshelves, meeting spaces, study spaces, computers, and all the all those elements that would be maintained from the previous design.

Jason Fisher (Architect - SOM) 00:51:40

I'm just going to fly back to the central point here, and then take the path of a family, for example, that might be visiting the children's collection. You may be able to walk directly down the stairs here. I'm just gonna walk down the stairs. And then this is kind of the volume of that learning stair. You really get a lot of height here, you get a lot of connectivity, very likely the events that are happening here are going to be loud. They're going to be active. Not necessarily the case all the time, but it is kind of a very active moment in the design. We have a line of interior glass here that protects some of the activity of the main entry and this kind of more active space from the children's collection itself.

Jason Fisher (Architect - SOM) 00:52:30

Another thing to note, kind of in general, which we've maintained from the previous design, that the entire lower level is the children's collection. It has tons of security benefits, noise benefits, all of those things that we talked about previously, which is maintained.

Jason Fisher (Architect - SOM) 00:52:46

And then here, this is an opening. What you can't see because it's a very, again, a very conceptual model, is a line of glass on the upper level. So that does protect from noise filtering from you know, sometimes a very active children's collection up to study spaces, for example, on the ground level. And under directly above that is a skylight that we're using to make sure we're bringing daylight into that lower level.

Jason Fisher (Architect - SOM) 00:53:11

I'm just going to come back towards the end of the tour here to the elevators. Again, this is the arrival that you would have from the elevators directly from the main entry. You would come in and you would see kind of the expanse of that collection space. Conveniently right under the learning stair there would be storage for strollers and coats and backpacks, for example, that can be utilized under the stair.

Jason Fisher (Architect - SOM) 00:53:41

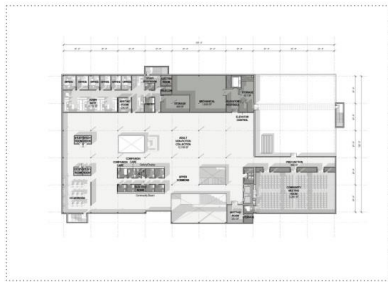
Okay. So, I see people looking at the screen. I don't know if that was big enough or not. But you guys are all good? Okay.

Jason Fisher (Architect - SOM) 00:53:54

Okay, so that's the end of the tour. Actually, it's not the end of the tour. What I do want to do is just kind of swing around the rest of the facade. This was a facade that we had developed quite a bit over the course of the entirety of the project, thinking about the spaces that need daylight, right here. And right in front of us, you see actually a loading dock door here for deliveries that ties directly into the back of house space. But certainly, there's a window here that fronts onto the flex box. And then of course, a series of windows that brings daylight into the collection.

Floor Plans

Total Area: 90,150 SF (103,335 Previous Total SF)



Upper Level Area: 28,775 SF

22,275 Existing SF
1,850 New Slab SF
4,650 Overbuild SF

28,775 Total SF

28,750 Previous Total SF

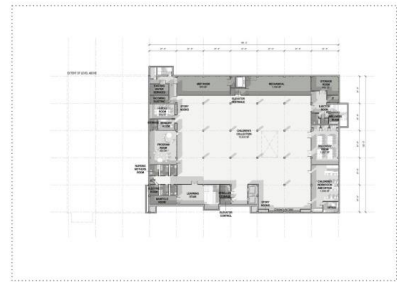


Ground Level Area: 36,950 SF

35,000 Existing SF
1,950 New Slab SF

36,950 Total SF

43,275 Previous Total SF



Lower Level Area: 24,425 SF

24,425 Existing SF
No New Slab

24,425 Total SF

31,310 Previous Total SF

APPLETON PUBLIC LIBRARY
SKIDMORE, OWINGS & MERRILL

Jason Fisher (Architect - SOM) 00:54:31

Now one thing that we really like about the redesign is that that facade really ties well into the rest of the facade that that has been previously designed and coordinated and, and brings a lot of great daylight into the collection space itself.

Jason Fisher (Architect - SOM) 00:54:51

Again, conceptual model. So, we've left out landscaping and all the detailed elements that would happen in real construction once it's built. Okay? That's it.

Mayor Jake Woodford 00:55:07

Very good. Thanks, Jason. Alright. I think I think we're good. He checked with folks and they were able to see on his screen, which was on the podium. Okay, welcome Darrin.

Darrin Pursley (Boldt Company) 00:55:24

We certainly appreciate the opportunity to come back and give another update on the library project. So as Dean had kind of hinted at, since we saw you folks last, we've, you know, continued our support with the city and with SOM on the design and the program. Continued to challenge the local subcontractor market to find more efficient, more cost-effective ways to build this project. Continued our cost estimating support on different

ideas as they're coming up, and continued support on the optimization of material selections. And Dean and I, if we don't talk every day, we're talking every other day. Same with Director Rortvedt and her team.

Darrin Pursley (Boldt Company) 00:56:12

So as for market conditions, it's one thing Director Gazza had wanted me to touch on is we certainly see the market starting to ease. We see a lot of the subcontractor community looking for work to fill their backlog, which is very encouraging. We've not seen that in in some time. I can't recall the last time I've gotten multiple calls from subcontractors in the same week, you know, asking, "Hey, what's, what's on the horizon? What can we look at for you?" Usually, you know, we're, we're begging people to, you know, hey, could you do us a favor, let's, let's look at this project to help us out. That type of stuff. So, there's, there's certainly been a shift in the market, which is very encouraging for this project, and for our upcoming bid date. So, thank you, everyone.

Mayor Jake Woodford 00:57:02

Thanks, Darrin.

Director Dean Gazza (Parks, Recreation, and Facilities) 00:57:07

Thank you, guys. Does anybody have any questions?

Mayor Jake Woodford 00:57:11

Okay.

Director Dean Gazza (Parks, Recreation, and Facilities) 00:57:12

Questions here.

Mayor Jake Woodford 00:57:13

All right. So, if you don't mind, let's use the tablets and that'll just help us keep

Director Dean Gazza (Parks, Recreation, and Facilities) 00:57:17

Or feedback.

Mayor Jake Woodford 00:57:18

All right. Alder Fenton.

Aldersperson Denise Fenton (District 6) 00:57:21

Thank you, Chair. Um Director Gazza, just a couple of questions about the design. I know we talked about keeping the exterior book drop. Is that still going to connect to a material handling system like we talked about in the first design?

Director Dean Gazza (Parks, Recreation, and Facilities) 00:57:36

Yes.

Aldersperson Denise Fenton (District 6) 00:57:36

Is Director Rortvedt not here?

Director Dean Gazza (Parks, Recreation, and Facilities) 00:57:38

The material handling room is right up right up front.

Aldersperson Denise Fenton (District 6) 00:57:41

And on the community center, how many people is that going to hold in this design?

Director Dean Gazza (Parks, Recreation, and Facilities) 00:57:50
300

Aldersperson Denise Fenton (District 6) 00:57:51
300. Okay, that's down a little bit from the original.

Director Dean Gazza (Parks, Recreation, and Facilities) 00:57:54
Yes, it is. Yes.

Aldersperson Denise Fenton (District 6) 00:57:55
Like that was four hundred.

Director Dean Gazza (Parks, Recreation, and Facilities) 00:57:56
I think we were closer to four?

Executive Director Colleen Rortvedt (Library) 00:58:01
The last count I saw was 315. We had been at four. Our current meetings—our previous meeting space at the old Oneida library was, I think, technically 275, but we didn't have enough chairs for 275 at the end.

Aldersperson Denise Fenton (District 6) 00:58:18
Thank you. And just one more I promise. Director Gazza can predict this one. Solar panels on the roof.

Director Dean Gazza (Parks, Recreation, and Facilities) 00:58:27
Yes, solar panels. We have an agreement with WEC and Sun Power to put solar panels on the roof yet.

Aldersperson Denise Fenton (District 6) 00:58:33
Thank you.

Director Dean Gazza (Parks, Recreation, and Facilities) 00:58:34
Yep.

Mayor Jake Woodford 00:58:37
Other questions? If you don't mind, just use your tablet. Alder Alfheim.

Aldersperson Kristin Alfheim (District 11) 00:58:44
Thank you, chair. Just a word of thanks from all of us for working so hard. We—I think we truly want this project to find success for the good of the community, but really do have to pay attention to what's going on in the climate. So, the effort of all of you to maximize our square footage and the existing resources to make this thing come in under budget and still be a magical opportunity for our community is really a big deal. So, continue the work. We appreciate the transparency and the truly the ultimate effort of looking out for everybody to get the absolute best bang for our buck that we can and still be mindful of our promise in terms of budget. Thank you.

Director Dean Gazza (Parks, Recreation, and Facilities) 00:59:26
Thank you.

Mayor Jake Woodford 00:59:28

Alder Doran.

Aldersperson Chad Doran (District 15) 00:59:30

Thank you. I guess a couple things we didn't hear that just curious about. How much square footage are we actually adding now to the building?

Director Dean Gazza (Parks, Recreation, and Facilities) 00:59:40

Adding?

Aldersperson Chad Doran (District 15) 00:59:40

Yeah.

Director Dean Gazza (Parks, Recreation, and Facilities) 00:59:41

About 5000, 5 to 6000 over what we have right now.

Aldersperson Chad Doran (District 15) 00:59:45

So, from the original building, which was 86,000, the last proposal was somewhere around 107. So now we're back down to about 90ish...

Director Dean Gazza (Parks, Recreation, and Facilities) 00:59:54

Yes

Aldersperson Chad Doran (District 15) 00:59:55

...thousand. Okay. And, I guess cost wise, um, what are we? Where are we sitting there?

Director Dean Gazza (Parks, Recreation, and Facilities) 01:00:02

Cost wise and estimates? We're near target. We are a little bit over in, you know, in certain areas, but it's very conceptual in regards to the estimating, and we're working on that, to get that refined and get that within budget.

Aldersperson Chad Doran (District 15) 01:00:16

I mean, when you say we're a little over, so we're a little over the 26 million, or the 40 40 million, I guess where...?

Director Dean Gazza (Parks, Recreation, and Facilities) 01:00:23

No, the construction portion of that budget is greater than 26. Right, low 30s.

Aldersperson Chad Doran (District 15) 01:00:36

And I just had a question, I guess. I think it was mentioned that the bathrooms were moved, and the elevators, obviously were moved. I know, those are both big expenses when you have to move plumbing and things like that. Is that more of a function of just trying to create more functional space then? Do we think it was that critical to move those things for that reason?

Director Dean Gazza (Parks, Recreation, and Facilities) 01:00:56

So, for example, the meeting room, if you remember, it was off to the left side of the building. And with the meeting room going to the right side of the building, we moved to elevators to make sure it was in an efficient place to move people up and down.

Alderson Chad Doran (District 15) 01:01:10

Okay.

Jason Fisher (Architect - SOM) 01:01:15

There's the existing library, which has very, I would say below standard bathroom facilities, as we all know. And then there was the design that we presented previously, that had a similar setup, but slightly shifted in the latest version. So, when I was talking about the shift from the block of bathrooms to the new design, it doesn't actually represent ripping out plumbing that was previously there. It's kind of a fresh start, no matter what we do with the location of the bathrooms.

Alderson Chad Doran (District 15) 01:01:45

Thank you. And then I guess the—just for clarification, I think you talked Dean early on, before we really started looking at this, we are still meeting all of the goals of all the needs, I guess that the library was looking for?

Director Dean Gazza (Parks, Recreation, and Facilities) 01:01:58

Yeah, absolutely. You know, the way I the way I look at this is similar, I think, an analogy would be if I were building a home and I was told it was over budget, and I wouldn't get rid of the kitchen, I need to kitchen, need to bathroom, need the bedroom. But what I might do is make the closet a little bit smaller, because it's not as important as some of the other functions. I might double the use of some spaces, and things like that.

Director Dean Gazza (Parks, Recreation, and Facilities) 01:02:23

And basically, we kept all the all the features to make the library be successful, not only in the short term, but the long term. And that's, that's what was exciting about the project is as you're moving through it, and you're going through this process, you're like, "Okay, can we hit that target, but yet keep all those goals?" And when we did that, that's when you know, you're ultimately like, "This is this is a go. This is great. We're gonna make this happen. We're gonna stay committed to what we said we would do." And so, a lot of excitement around that. We're happy to deliver that news tonight.

Alderson Chad Doran (District 15) 01:03:00

Thank you. And I guess this last question. So, if we're—I guess I'm just trying to wrap my head around how we're how we got to here, where we're adding much less space than what we had proposed, I guess the last time around, you know, roughly 15ish thousand square feet plus, yet we're still achieving all the goals we had. What's different now that we were able to achieve all the goals in much less space than the last time where we added much more space, and also still met those goals? I guess?

Director Dean Gazza (Parks, Recreation, and Facilities) 01:03:34

Yeah,

Mayor Jake Woodford 01:03:35

Director Rortvedt.

Executive Director Colleen Rortvedt (Library) 01:03:38

So, I think one of the ways that we're doing that was by doubling down on those multi use spaces. So, the sacrifices that we're going to have to coordinate and not have a teen program, when there's something in the flex box. You know we—it's choices. It's fewer programs.

Executive Director Colleen Rortvedt (Library) 01:03:54

We have a very—we have a history of a high volume of program and event use in the library. We topped out at almost 5000 in the years before the pandemic. So that is going to impact usage numbers. It's going to impact the number of spaces that the community can book because so much of that use isn't the library controlling that. We just facilitate the communities use and that's when things like you know, other community groups pop up, that's where all of our sister cities were born. So, it will be a juggling act to make sure that we allow as much community space as possible. But it's not like we can do everything that we were going to do before with all of those other spaces. It'll just be challenges of scheduling and things like that. We're used to that. We've been doing it for 20 years, so we'll keep doing it.

Mayor Jake Woodford 01:04:50

Any other questions Alder Doran?

Mayor Jake Woodford 01:04:53

I'm good. Thanks.

Mayor Jake Woodford 01:04:53

Okay. Alder Van Zeeland?

Aldersperson Katie Van Zeeland (District 5) 01:04:58

Thank you Chair I was contacted by many parents and grandparents who loved that children's garden. And I understand the excavation for that was extremely costly. We had to make some tough decisions. I'm just wondering if this building is being built in a way that should we want to add something like that later, it would be easy to do so.

Director Dean Gazza (Parks, Recreation, and Facilities) 01:05:22

It could be added. Easy is easy is the magic question. Even in any situation that excavation and so forth. But yes, it could be done. But we're looking at other ways of doing that. Colleen and the design team are looking at a space potentially out front. We're looking at a space also whether it be now or in the future that could be used for some outdoor space to for some flexible programming to bring whether it be children out or adults who just want to go out and read a book.

Aldersperson Katie Van Zeeland (District 5) 01:05:53

Thank you.

Mayor Jake Woodford 01:05:58

All right. Alder Del Toro.

Aldersperson Israel Del Toro (District 4) 01:06:03

Thank you, chair. My question is—well, first of all, I have a comment. Thank you for keeping geothermal. Thank you for doubling down on maintaining solar panels on the roof. The environmental footprint of this building is crucially important to many of us, and I think to many of the community, so I really appreciate the efforts to go that route.

Aldersperson Israel Del Toro (District 4) 01:06:23

My question, and my point of concern is the structure of the bidding system that was deployed on the previous iteration of this project. We—if I remember correctly, there were many small bids that were taken instead of

larger bids? Are we following that same system this time around? Or are we able to conglomerate some of these to make more lucrative projects for developers and hopefully, cut down on some of the expenses and come hopefully, under budget this time?

Director Dean Gazza (Parks, Recreation, and Facilities) 01:06:50

Yeah, we are still looking at doing it separate. But then even when a general contractor would bid it out, and you'd have one package, each of these subcontractors are providing individual bids, whether it be to the gen—general contractor or us. They have the ability to bid on as many as they want. It's generally the most efficient way, most productive way in regards to getting the best bang for your dollar. And so, you know, we believe, still strongly in that where—trying to think of some examples.

Director Dean Gazza (Parks, Recreation, and Facilities) 01:07:23

You know, we still haven't broken out enough to create that competition, because if you were to put all the mechanicals for example, under one package, you know, the guy that does HVAC, there are companies that also do plumbing. But most of them don't. There's an HVAC company or a plumbing company. Want to give both of those smaller companies or companies the opportunity and not package it in that it only it only can be done by the person who has, you know, has the ability in-house. So, in essence, we should be creating a lot more competition.

Director Dean Gazza (Parks, Recreation, and Facilities) 01:07:54

What we had heard, when we visited lot, the contractors, it was just a matter of being busy. We're just you know, one company initially said, "Hey, we, we downsized, and now we're trying to upsize, we just didn't have the time to do it." When we talked to a mechanical company, he goes "I bid on HVAC, but I didn't on the plumbing because my plumbing team was just too busy." When we were talking about carpeting flooring, they were saying that would have been had been late during the school season when the schools were in session. And that's why we didn't bid on it. So, it's always a went back to really being too busy and just too much work in the market and not enough labor. And so, as we see projects easing and as we make our way into 2024, the definitely starts making as we get to the end of 23 and 24. So we're hopeful that things will definitely improve.

Aldersperson Israel Del Toro (District 4) 01:08:51

Thank you, Director.

Mayor Jake Woodford 01:08:52

Other questions, Alder Doran.

Aldersperson Chad Doran (District 15) 01:08:59

Thank you. Just one more I guess I forgot earlier that we hadn't talked about yet. Where—do we know where we're at with the fundraising effort by the Friends group? Or do we do we know will this be this kind of scaled back design impact that effort at all? Do we anticipate?

Executive Director Colleen Rortvedt (Library) 01:09:18

So, the Friends have been maintaining contact with individuals who have expressed interest in the project. Their timeline shifts with our timeline, though. So, the donors, they have donors who are really interested. They have donors who have repeatedly been in contact with them. I know that the Friends director has been circling back to ensure that potential donors know that this update was happening tonight so they can see what's going on. So, at this point, though, we've been seeing that we're still on track. We don't have any concerns that we've been hearing about loss of interest in the project. We heard positive feedback after the mayor's op ed. And so that's been, I think everything's on track for that.

Alderson Chad Doran (District 15) 01:10:09

Thank you.

Mayor Jake Woodford 01:10:10

I'll just say we've had really extraordinary support from the community for the project. And that includes the donor community. And we should not underestimate how important that is. And just, we're deeply grateful for the support and the commitment of donors who've been sticking with us through this process. It's iterative. But I've just, I've been really grateful for the support. And the city of Appleton is grateful for the support of donors who've already raised their hand to be part of this project, and who are sticking with us as we make our way through design changes. That that really is going to carry us. So, I just wanted to add that point to Director Rortvedt's comments. Further questions? Alder Wolff.

Alderson Nate Wolff (District 12) 01:11:03

Thank you, Chair. So, this is on something else that's been discussed at one point or another. So, at one point, there were some conversations about the library, the parking ramp, and the transit center, and somehow intermingling all of them. Does this new design incorporate any of that or?

Director Dean Gazza (Parks, Recreation, and Facilities) 01:11:25

Yeah, when we would—we've been working with Director MacDonald and the entire transit center. In fact, we had a meeting today. There was a lot of conversation about how they interact together, not only in appearance, in, in functionality, and especially with Oneida Street between how Oneida Street is going to function. How is that going to work in a way that's going to enhance the library, but also meet all the needs of the transit center. So, a lot of lot of conversations in tie in with both facilities.

Director Dean Gazza (Parks, Recreation, and Facilities) 01:11:57

And I think, you know, it just beneficial that the fact that they're both happening in a similar timeframe that we can have these conversations. Otherwise, you know, it would have been more difficult. So, both facilities will end up better for it.

Alderson Nate Wolff (District 12) 01:12:12

Thank you.

Mayor Jake Woodford 01:12:15

All right. Well, I just want to thank the team that presented and that's been working on this project. Just an incredible amount of effort to go back into the design and to deliver this refined concept. So, I just again want to thank the team appreciate all the work and for the support of the community as we continue to make our way through the projects. Thank you all very much.

Mayor Jake Woodford 01:12:41

If you have questions for Council if you if you have questions after you've had some time to think about this, please do not hesitate to be in touch with directors Rortvedt or Gazza it if you want to ask more questions, have more conversation. Alder Hartzheim, you sneak in under the wire. Okay, go ahead.

Alderson Sheri Hartzheim (District 13) 01:13:01

Thank you Chair. Your comments reminded me, will some of these displays be available on the minutes of this meeting or somehow otherwise available to us to disperse to the public?

Mayor Jake Woodford 01:13:13

All of them.

Aldersperson Sheri Hartzheim (District 13) 01:13:14

Thank you.

Mayor Jake Woodford 01:13:14

Yeah. Okay, thank you very much.